

---

# **YRS Facility Populations**

## **by Quarter for 2013-2015**

---



**February 2016**

**Prepared by  
State of Delaware  
Criminal Justice Council**

**STATISTICAL ANALYSIS CENTER**



# **YRS Facility Populations**

## **by Quarter for 2013-2015**

**Thomas F. MacLeish, Director**  
**Statistical Analysis Center**

**Author:**  
**Brie A. Gannon**  
**Philisa J. Weidlein-Crist**

**Data Collection and Preparation:**  
**Joseph W. Vattilana**  
**Charles J. Huenke**  
**Andrew J. Huenke**  
**Andrew Gillis**

This report is supported by the Bureau of Justice Assistance – Office of Juvenile Justice and Delinquency Prevention Grant Number 2012MUMUK002.

The points of view expressed in this document do not necessarily represent the official position of the United States Department of Justice.

State of Delaware Document number 100703 160203

Please visit our website @ <http://cjc.delaware.gov/sac/publications.shtm>



## YRS Facility Populations by Quarter for 2013-2015

YRS facility population information was obtained from YRS for admissions and release to Secure Detention, Level 5 and Level 4 facilities for calendar years 2013 through 2015. Using YRS data provided, SAC compiled the admissions and releases, and removed all internal transfers. An internal transfer from one facility to another within the same Level is used for various reasons including case processing and safety. These are not new admissions to a facility, and should not be counted as such. For this reason, New Castle County Detention Center and Stevenson House information will be combined for the purposes of reporting population information. Many transfers occur between these two facilities. Displaying the populations by facility would not be valid as the admissions and releases would not balance with the snapshot population by facility. By combining the facilities, the complications of admission to NCCDC but release from Stevenson House or vice versa are not visible. Moreover, a word of caution is urged when comparing this quarterly data to previous provided quarterly data. The extent to which internal transfers were counted previously is unknown, and so comparisons cannot be made with years prior to 2010 .

To identify the reason for each placement at Secure Detention, Level 5 and Level 4, SAC used the case information provided by YRS in addition to performing an in depth review of CJIS and JIC to label each placement either a Felony, Misdemeanor, VOP, Misdemeanor and VOP, Drug/Gun Court Sanction, Failure to Appear (FTA) or Failure to Pay (FTP), Sentence Review/ Status Hearing, Administrative or Other/Unknown. The other/unknown category contains juveniles held for Truancy, Material Witness, INS detainers, no case information found for stay or no SBI information found, along with other infrequent reasons such as a judge's order. The types of stay for the years 2010 through 2015 have changed slightly from reporting on previous years due to a deeper review of each juveniles' charges. The majority of changes occurred upon closer evaluation of the Misdemeanor/VOP category. In which the stay types were redistributed, in many cases, to either a Misdemeanor or a VOP.

The final component of this report is juvenile demographic information. Race, Ethnicity, Sex and Age are included in most sections. Race is broken into Black, White and Other. The Other category includes Asian and American Indian/Alaskan Native. These two groups were combined for the Other category because the numbers are small. Ethnicity includes Hispanic and Non-Hispanic, and is combined with Race for some tables. Sex is displayed only for Secure Detention information because these are the only mixed gender institutions. Grace Cottage, Level 4, is an all girls facility, with the other Level 5 and Level 4 treatment facilities being male only. Age at admission is displayed for each level and ranges from 9 up to 19.

## **Highlights-Through 4th Quarter 2015**

- The overall YRS admissions have decreased 8.7% from first quarter 2015 to fourth quarter 2015, and are down 15.0% in comparison to quarter three of 2015. YRS admissions have decreased 12.8% from full year 2014 to full year 2015.
- Overall, YRS saw a decrease in releases from third quarter 2015 to fourth quarter 2015, of 11.3%, as well as a 11.3% decrease compared to quarter four of 2014.

### **Secure Detention**

- Secure Detention decreased by 24.5% in quarter four of 2015 compared to quarter four of 2014.
- Fourth quarter 2015 shows a 6.0% decrease in the Secure Detention population at the December 31, 2015 snapshot, in relation to the quarter four 2014 snapshot. However, it is down 8.2% from the third quarter of 2015.
- Felony detention admissions make up 34.2% of the reasons juveniles are detained.
- Black non-Hispanic juveniles make up 67.1% of the admitted population.
- Male juveniles account for 80% of the admitted population.
- Age at admission for 75.8% of juveniles was between ages 15 and 17.
- The majority (72.9%) of juveniles spent less than 31 days detained.

### **Level 5 Ferris**

- Ferris' snapshot remained fairly steady from third quarter 2015 to fourth quarter 2015, with only a seven person decrease, from 42 to 35.
- Felony detention admissions make up 65% of the reasons juveniles are detained.
- Black non-Hispanic juveniles make up 80% of the admitted population.
- In fourth quarter 2015, 86.6% of the youth were age 16 or 17 at admission.
- Eighty one percent of juvenile felony releases for the year of 2015 had a length of stay between six and twelve months.

### **Level 4 Cottages**

- Average daily population for all three cottages has remained fairly stable across quarters from 2013 through 2015.
- Mowlds cottage houses the largest number of juveniles admitted for a felony due to the flow of youth to Mowlds from Ferris.
- Grace cottage admissions for 2015 were comprised of 47.6% felony admissions with the remaining 52.4% for either a Misdemeanor or VOP. Snowden's 2015 population was admitted for a felony at a rate of 48.6% and a Misdemeanor or VOP at a rate of 51.4%.
- Nearly 90% of juveniles released from Snowden in 2015 served from 31 days to 6 months. Nearly three quarters (77.2%) of juveniles released from Mowlds served 31 to 60 days, while 78.9% served between 61 days to 6 months at Grace.

The overall YRS admissions have decreased 8.7% from first quarter 2015 to fourth quarter 2015, and, are down 15.0% in comparison to quarter three of 2015. Table 1 illustrates that YRS admissions have decreased 12.8% from full year 2014 to full year 2015. Secure Detention decreased by 24.5% in quarter four of 2015 compared to quarter four of 2014. Level 5 admissions decreased slightly, while Level 4 admissions increased 5.5% from third quarter 2015 to quarter four of 2015. Table 2 shows a decrease in overall YRS releases from third quarter 2015 to fourth quarter 2015, of 11.3%, and an 11.3% decrease compared to quarter four of 2014. The next sections are grouped by Secure Detention, Level 5 and Level 4 and provide more detailed admission, release, snapshot, and demographic information.

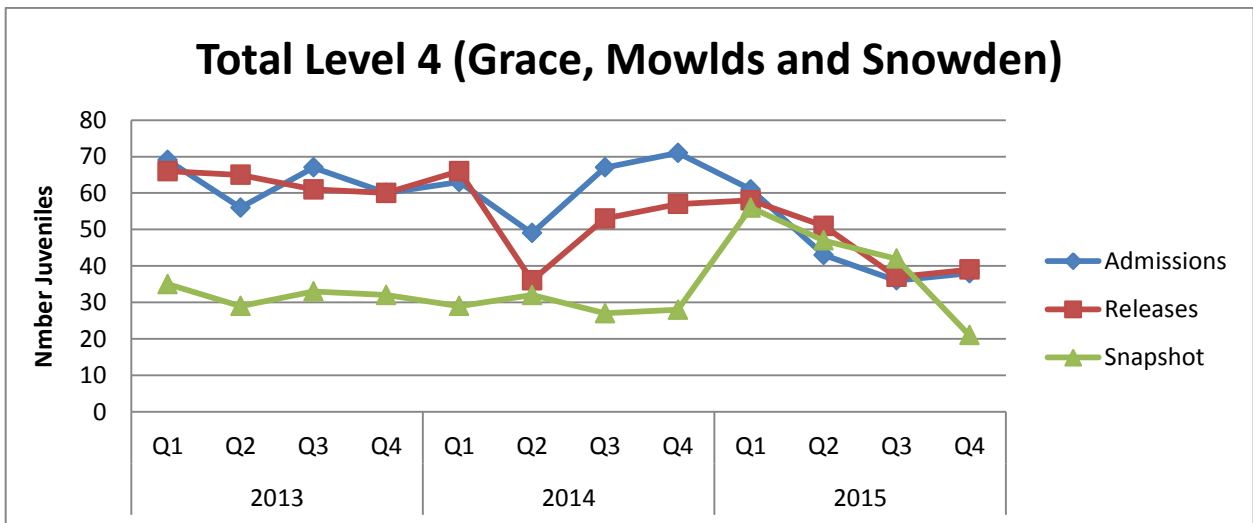
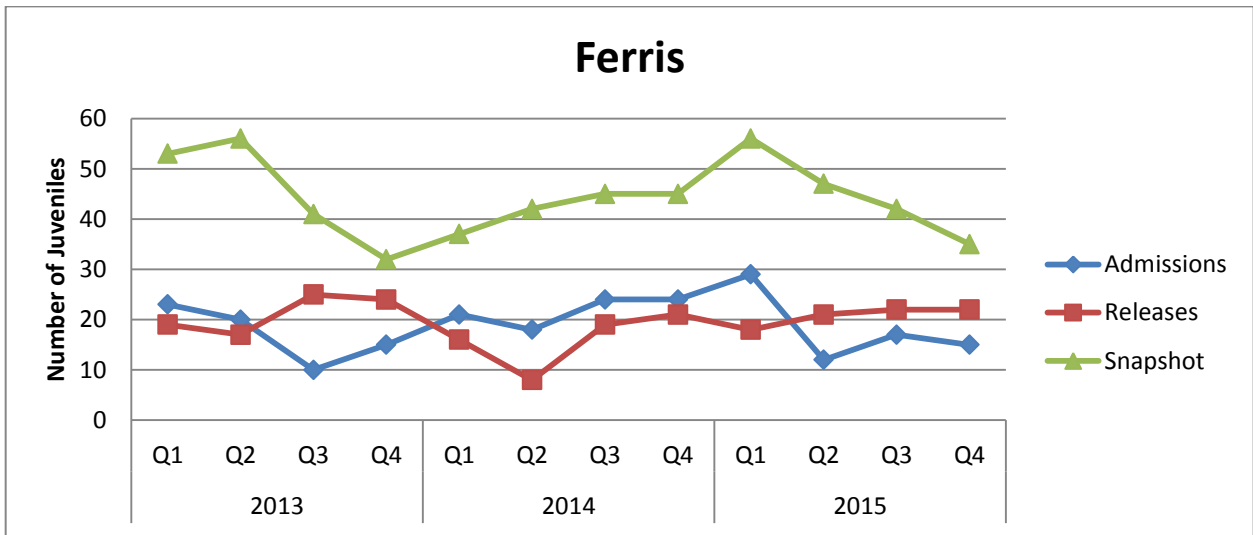
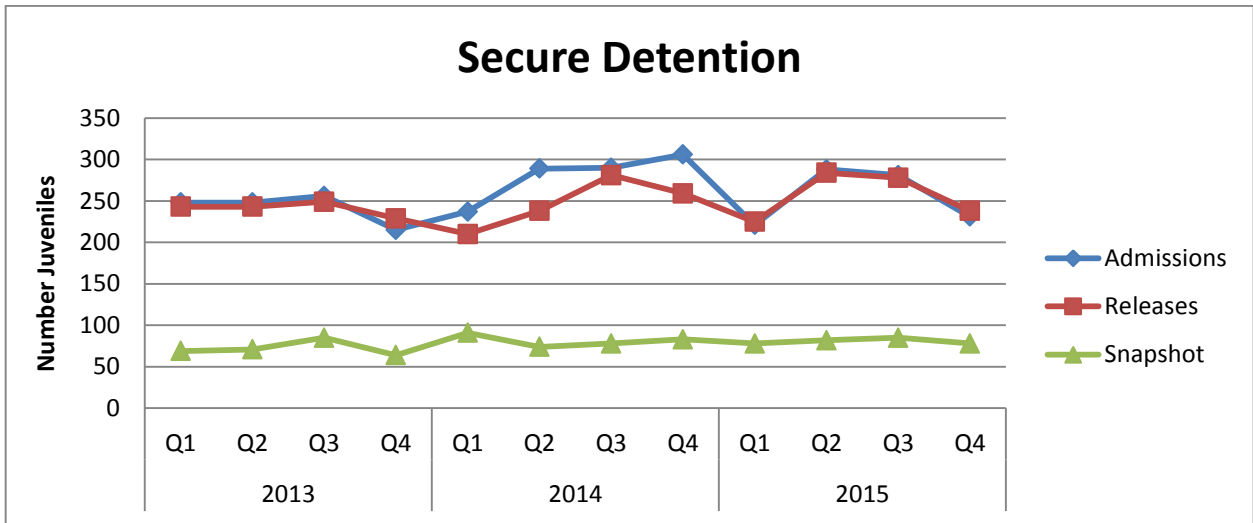
*Table 1: YRS Facility Admissions*

		2013				2014				2015			
		Q1	Q2	Q3	Q4	Q1	Q2	Q3	Q4	Q1	Q2	Q3	Q4
SD	Secure Detention	248	245	256	215	237	289	290	306	221	288	281	231
L5	FERRIS	23	20	10	15	21	18	24	24	29	12	17	15
L4	GRACE	6	8	11	12	12	5	9	8	6	5	3	7
	MOWLDS	48	30	44	36	39	30	40	44	42	30	24	24
	SNOWDEN	15	18	12	12	12	14	18	19	13	8	9	7
	Total L4	69	56	67	60	63	49	67	71	61	43	36	38

*Table 2: YRS Facility Releases*

		2013				2014				2015			
		Q1	Q2	Q3	Q4	Q1	Q2	Q3	Q4	Q1	Q2	Q3	Q4
SD	Secure Detention	243	243	249	229	210	238	281	259	225	284	278	238
L5	FERRIS	19	17	25	24	16	8	19	21	18	21	22	22
L4	GRACE	14	9	7	14	11	5	5	9	4	5	6	4
	MOWLDS	43	37	38	37	44	20	33	35	40	34	23	26
	SNOWDEN	9	19	16	9	11	11	15	13	14	12	8	9
	Total L4	66	65	61	60	66	36	53	57	58	51	37	39

The next three graphs show admissions, releases and the snapshot population on the last day of the quarter for Secure Detention, Ferris and Level 4 Cottages (combined) for 2013-2015. All facilities have seen moderate increases and decreases in their admissions and releases since 1<sup>st</sup> quarter 2013. Populations for secure detention remained fairly steady throughout 2013 through 2015, with a downward trend for Ferris and the cottages for the year 2015..





**Section 1: Secure Detention**

As previously stated, Secure Detention is comprised of New Castle County Detention Center (NCCDC), a 64 bed secure facility, and William Marion Stevenson House Detention Center (Stevenson House), a 55 capacity secure facility. Both lock-secure facilities house non-adjudicated male and female youths and provide academic education, psychological-ed programs, medical, dental and psychological services.

Table 3 shows a 6.0% decrease in the Secure Detention population at the December 31, 2015 snapshot, in relation to the quarter four 2014 snapshot. However, it is down 8.2% from the third quarter of 2015. In addition, Secure Detention average daily population is down by 9.1% from quarter four of 2014 to quarter four of 2015. Prior to January 1, 2013, there were 65 juveniles in Secure Detention. Snapshot populations are a look at who was in a facility on the last day of the quarter. First quarter 2014 houses the highest snapshot population and quarter three of 2015 has the greatest average daily population. Average Daily Population is presented to show a more accurate picture of the facility population for the entire quarter.

*Table 3: Secure Detention Quarterly Snapshots*

	2013				2014				2015			
	Q1	Q2	Q3	Q4	Q1	Q2	Q3	Q4	Q1	Q2	Q3	Q4
Secure Detention	69	71	85	64	91	74	78	83	78	82	85	78
Average Daily Population	70.2	67.2	75.8	73.1	74.5	74.7	72.4	82.4	81.2	72.3	90.6	74.9

The following tables pertain to Secure Detention Admissions by quarter for 2013- 2015. Table 4 describes the category of offense for which the juvenile was detained. Fourth quarter 2015 felony detention admissions make up 34.2% of the reasons juveniles are detained. Misdemeanors make up 45.0% and VOP’s contribute 11.7% of detained admissions for the fourth quarter 2015. The remaining detained admissions are spread among the other six categories and comprise less than 10.0% of detention admissions for this most recent quarter. The drug/gun court sanctioned stays are not associated with any “new” arrest, however, have a reference to gun or drug court in their sentencing on a prior arrest. These stays may have previously fallen under the VOP category, but upon closer review the juvenile is not being charged with a new VOP, but being brought back for an administrative hold for non-compliance on drug/gun court parameters.

Table 4: Secure Detention Admissions by Offense Type

Secure Detention Admission Type	2013				2014				2015			
	Q1	Q2	Q3	Q4	Q1	Q2	Q3	Q4	Q1	Q2	Q3	Q4
Felony	89	75	95	75	72	79	91	104	88	90	127	79
Misdemeanor	110	102	113	82	88	134	134	128	76	113	79	104
VOP	41	53	41	57	66	58	54	57	33	72	36	27
Misdemeanor and VOP	2	5	2	0	2	0	1	6	4	2	3	1
Drug/Gun Court Sanction	3	2	1	0	0	0	1	0	0	6	27	1
FTA or FTP	1	4	0	0	4	0	0	0	0	0	0	0
Sentence Review/ Status Hearing	2	2	1	0	3	12	8	8	20	5	9	5
Administrative	0	2	3	0	2	6	1	1	0	0	0	14
Other/Unknown	0	0	0	1	0	0	0	2	0	0	0	0
<b>Total</b>	<b>248</b>	<b>245</b>	<b>256</b>	<b>215</b>	<b>237</b>	<b>289</b>	<b>290</b>	<b>306</b>	<b>221</b>	<b>288</b>	<b>281</b>	<b>231</b>

Table 5, Table 6 and Table 7 display demographic information for Secure Detention admissions. Table 5 shows that the majority of Secure Detention admissions are Black juveniles at 67.1%. Hispanic juveniles make up only 9.1% of secure detention admissions for quarter four of 2015. Table 6 illustrates that females comprise about 25% of Secure Detention admissions. There was a notable increase in the percentage of female admissions from 16.7% in the third quarter of 2015 to 24.7% for the fourth. Table 7 displays age at admission to Secure Detention. Few offenders are admitted prior to age 14. The majority, 75.8%, of juveniles admitted to Secure Detention were between 15 and 17 years old. Age 14 and under detained admissions increased by 12.8%, from quarter three to quarter four of 2015.

Table 5: Secure Detention Admissions by Race & Ethnicity

SD		2013				2014				2015			
		Q1	Q2	Q3	Q4	Q1	Q2	Q3	Q4	Q1	Q2	Q3	Q4
Hispanic	Black	3	6	5	8	6	1	1	1	5	2	6	6
	White	15	16	19	20	19	18	15	16	9	15	15	15
	Other	1	0	0	0	0	0	1	0	2	0	1	0
	<b>Total</b>	<b>19</b>	<b>22</b>	<b>24</b>	<b>28</b>	<b>25</b>	<b>19</b>	<b>17</b>	<b>17</b>	<b>16</b>	<b>17</b>	<b>22</b>	<b>21</b>
Non-Hispanic	Black	171	160	181	143	162	203	215	217	164	221	222	155
	White	56	62	51	43	49	67	58	72	41	50	36	55
	Other	2	1	0	1	1	0	0	0	0	0	1	0
	<b>Total</b>	<b>229</b>	<b>223</b>	<b>232</b>	<b>187</b>	<b>212</b>	<b>270</b>	<b>273</b>	<b>289</b>	<b>205</b>	<b>271</b>	<b>259</b>	<b>210</b>

*Table6: Secure Detention Admissions by Gender*

	2013				2014				2015			
	Q1	Q2	Q3	Q4	Q1	Q2	Q3	Q4	Q1	Q2	Q3	Q4
Female	61	65	69	43	46	70	57	56	44	58	47	57
Male	187	180	269	172	191	219	233	250	177	230	234	174
% Female	24.5%	26.5%	19.5%	20.0%	19.4%	24.2%	19.7%	20.0%	19.9%	20.1%	16.7%	24.7%

*Table 7: Age at Admission to Secure Detention*

SD	2013				2014				2015			
	Q1	Q2	Q3	Q4	Q1	Q2	Q3	Q4	Q1	Q2	Q3	Q4
9-10	1	0	1	0	0	0	0	0	0	0	0	0
11	3	1	3	0	0	1	0	0	1	5	2	0
12	10	6	8	4	3	6	4	1	6	7	4	5
13	6	11	22	12	11	22	12	8	14	14	17	16
14	21	28	31	36	28	31	44	50	33	40	24	32
15	45	57	53	50	50	72	58	62	32	71	67	48
16	75	75	61	49	64	65	78	76	66	75	60	62
17	80	60	73	57	70	87	87	106	66	66	98	65
18-19	7	7	4	7	11	5	7	3	3	10	9	3
Total	248	245	256	215	237	289	290	306	221	288	281	231

The final table for Secure Detention, Table 8, displays Secure Detention releases by detention type and length of stay per year. The overwhelming majority of juveniles spend less than 31 days in detention (72.9%), for the year of 2015. Of those juveniles who spend more than 31 days in detention, the detention stays are for Felony, Misdemeanor or VOP. Very few juveniles spend more than 30 days in Secure Detention for Administrative Holds or Sentence Reviews.

Table 8: Secure Detention by Offense Type and Length of Stay

	1 Day	2-5 Days	6-10 Days	11-15 Days	16-20 Days	21-30 Days	31-60 Days	61-90 Days	3-6 Months	6-12 Months	1-1.5 Years	1.5-2 Years	
2013	Felony	32	78	24	15	23	37	67	25	13	13	5	
	Misdemeanor	40	141	48	42	25	30	58	16	8	3		
	VOP	4	32	33	29	18	30	30	10	4			
	Misdemeanor and VOP		1	3			2	2	1				
	Drug/Gun Court Sanction		2	4									
	FTA/FTP	2	1	1	1			1					
	Sent Rev/ Stat Hearing		2	2	1								
	Administrative		1		1	1							
	Other/Unknown		1	1	1								
Total Releases	78	259	116	90	67	99	158	52	25	16	5	0	
% of Total Releases	8.1	26.8	12.0	9.3	6.9	10.3	16.4	5.4	2.6	1.7	0.5	0.0	
2014	Felony	30	73	20	23	35	54	84	28	26	5		
	Misdemeanor	39	152	61	39	38	68	69	25	6			
	VOP	9	39	40	40	32	34	48	11	1			
	Misdemeanor and VOP		2				1	2	1				
	Drug/Gun Court Sanction				1								
	FTA/FTP												
	Sent Rev/ Stat Hearing	3	12	5	3	3	5	3	2				
	Administrative	1	3	4	1	1							
	Other/Unknown												
Total Releases	82	281	130	107	109	162	206	67	33	5	0	0	
% of Total Releases	6.9	23.8	11.0	9.1	9.2	13.7	17.4	5.7	2.8	0.4	0.0	0.0	
2015	Felony	15	110	28	14	18	20	75	31	26	25	2	1
	Misdemeanor	43	133	40	27	25	29	37	18	7	3		
	VOP	11	56	29	20	14	24	17	8	5	2		
	Misdemeanor and VOP	1	1	1	1	1		2					
	Drug/Gun Court Sanction		33		2		1						
	FTA/FTP												
	Sent Rev/ Stat Hearing	6	12	8	2	4	3	2	1				
	Administrative		14										
	Other/Unknown						1						
Total Releases	76	359	106	66	62	78	133	58	38	30	2	1	
% of Total Releases	7.5	35.6	10.5	6.5	6.1	7.7	13.2	5.7	3.8	3.0	0.2	0.1	

**Section 2: Level 5 Ferris**

Ferris is the YRS Level 5 facility that provides intensive rehabilitative treatment services for up to 72 male youth. Table 9 shows snapshot populations by quarter for Ferris along with average daily population. Ferris’ snapshot decreased by seven juveniles, from third quarter 2015 to fourth quarter 2015. However, showed a decrease of 21 juveniles compared to quarter one of 2015. The average daily population, which is typically a better indicator of population, has remained stable in overall population for Ferris in the years 2013 through 2015.

*Table 9: Ferris Snapshot Population by Quarter*

	2013				2014				2015			
	Q1	Q2	Q3	Q4	Q1	Q2	Q3	Q4	Q1	Q2	Q3	Q4
FERRIS	53	56	41	32	37	42	45	45	56	47	42	35
Average Daily Population	50.7	51.6	50.3	34.5	32.6	41.5	43.4	43.8	54.1	52.4	45.6	40.2

The next tables display information regarding Ferris admissions from 2013 to 2015. Table 10 shows the lead offense that caused the admission to Ferris by admission quarter. On average about 65% of juveniles are admitted to Ferris for Felony convictions, with some quarters as high as 82%.

*Table 10: Ferris Admissions by Admission Offense Type*

Ferris	2013				2014				2015			
	Q1	Q2	Q3	Q4	Q1	Q2	Q3	Q4	Q1	Q2	Q3	Q4
Felony	17	11	6	10	11	13	14	17	22	9	14	10
Misdemeanor	2	4	0	2	2	3	7	4	3	2	3	4
VOP	4	5	4	3	8	2	3	3	3	1	0	1
Misdemeanor and VOP	0	0	0	0	0	0	0	0	1	0	0	0
Administrative	0	0	0	0	0	0	0	0	0	0	0	0
Totals	23	20	10	15	21	18	24	24	29	12	17	15

Table 11 and Table 12 explain the demographic make-up of Ferris admissions. Like Secure Detention, Ferris admissions are overwhelmingly Black (70% to 90%) and Non-Hispanic (80% or more). Table 12 describes the age of juveniles admitted to Ferris, which range in age from 13 to 19 years old. The majority of juveniles admitted to Ferris are 15 to 17.

*Table 11: Ferris Admissions by Race and Ethnicity*

Ferris		2013				2014				2015			
		Q1	Q2	Q3	Q4	Q1	Q2	Q3	Q4	Q1	Q2	Q3	Q4
Hispanic	Black	0	0	0	0	1	0	0	1	0	0	1	1
	White	1	1	2	2	2	2	1	0	2	0	1	1
	Other	0	0	0	0	0	0	0	0	0	0	0	0
	<i>Total</i>	<i>1</i>	<i>1</i>	<i>2</i>	<i>2</i>	<i>3</i>	<i>2</i>	<i>1</i>	<i>1</i>	<i>2</i>	<i>0</i>	<i>2</i>	<i>2</i>
Non-Hispanic	Black	15	15	6	12	16	13	22	19	21	9	13	12
	White	7	4	2	1	2	3	1	4	6	3	2	1
	Other	0	0	0	0	0	0	0	0	0	0	0	0
	<i>Total</i>	<i>22</i>	<i>19</i>	<i>8</i>	<i>13</i>	<i>18</i>	<i>16</i>	<i>23</i>	<i>23</i>	<i>27</i>	<i>12</i>	<i>15</i>	<i>13</i>

*Table 12: Ferris Admissions by Age at Admission*

Ferris	2013				2014				2015			
	Q1	Q2	Q3	Q4	Q1	Q2	Q3	Q4	Q1	Q2	Q3	Q4
13	0	0	0	1	0	0	1	0	0	0	0	0
14	2	2	0	0	2	2	1	1	3	0	0	2
15	1	3	0	5	5	2	1	6	2	5	3	0
16	7	4	1	4	6	6	10	7	14	2	2	5
17	9	10	7	5	5	8	10	10	9	4	10	8
18-19	4	1	2	0	3	0	1	0	1	1	2	0
<i>Total</i>	<i>23</i>	<i>20</i>	<i>10</i>	<i>15</i>	<i>21</i>	<i>18</i>	<i>24</i>	<i>24</i>	<i>29</i>	<i>12</i>	<i>17</i>	<i>15</i>

The last table for Level 5 illustrates the length of stay for offenses for juveniles released at any time during that year. Table 13 shows that the majority of juveniles spend 6-12 months at Ferris for a felony conviction. Less than 4% spend more than 1 year at Ferris for any offenses. Of all juveniles released from Ferris in the year 2015, 78.3% had a stay associated with a felony conviction.

*Table 13: Ferris Length of Stay at Release by Offense Type*

Level 5	1 Day	2-30 Days	31-60 Days	61-90 Days	3-6 Months	6-12 Months	1-1.5 Years	1.5-2 Years	2-2.5 Years
2013	Felony				5	48	2		
	Misdemeanor				3	13	1		
	VOP			1	3	9			
	Misdemeanor and VOP								
2014	Felony				3	32	1		
	Misdemeanor	2		1	1	6			
	VOP	1		1	2	15			
	Misdemeanor and VOP								
2015	Felony		1		9	50	5		
	Misdemeanor		1			8			
	VOP					9			
	Misdemeanor and VOP								

**Section 3: Level 4 Cottages: Grace, Mowlds and Snowden**

YRS Level 4 facilities include Grace Cottage, Mowlds Cottage and Snowden Cottage. Grace houses only females and has a 14 youth capacity. Mowlds Cottage, with a 16 youth capacity, houses male youth transitioning from Ferris School and short-term commitments for Aftercare supervision direct from Family Court. Snowden Cottage has a 15 male youth capacity. Table 14 shows the snapshot populations by quarter for each facility and the average daily population per quarter. Populations by cottage have remained fairly consistent with only slight increases and decreases. Average daily populations for the cottages for the year 2015 are 4.3 for Grace, 12.5 for Mowlds and 9.3 for Snowden.

*Table14: Level 4 Snapshot Populations by Quarter*

	2013				2014				2015			
	Q1	Q2	Q3	Q4	Q1	Q2	Q3	Q4	Q1	Q2	Q3	Q4
GRACE	4	5	8	5	6	4	6	3	5	5	2	5
Average Daily Population	6.5	3.0	7.8	5.4	5.0	5.1	5.6	5.9	4.9	4.2	3.6	4.5
MOWLDS	16	10	15	14	9	14	10	12	14	10	11	9
Average Daily Population	15.3	12.8	12.3	14.7	13.5	9.5	11.8	13.0	14.4	13.9	10.4	11.2
SNOWDEN	15	14	10	13	14	14	11	13	12	8	9	7
Average Daily Population	12.6	12.9	13.3	9.8	13.3	14.0	13.9	13.1	14.0	8.6	7.6	7.1

Table 15 shows admissions to Level 4 facility by type of offense. Mowlds Cottage houses the largest number of juveniles admitted for a Felony due to the flow of youth to Mowlds from Ferris. Grace cottage admissions for 2015 were comprised of 47.6% felony admissions and the remaining 52.4% were for either a Misdemeanor or VOP. Snowden’s 2015 population was admitted for a felony at a rate of 48.6% and a Misdemeanor or VOP at a rate of 51.4%.



Table 15: Level 4 Admissions by Offense Type and Facility

Grace	2013				2014				2015			
	Q1	Q2	Q3	Q4	Q1	Q2	Q3	Q4	Q1	Q2	Q3	Q4
Felony	2	1	2	0	2	0	2	1	3	3	3	1
Misdemeanor	2	2	2	7	2	1	4	3	0	2	0	4
VOP	0	0	4	4	5	3	3	4	3	0	0	2
Misdemeanor and VOP	0	0	0	0	0	0	0	0	0	0	0	0
Administrative	2	4	1	1	3	1	0	0	0	0	0	0
Other/Unknown	0	1	2	0	0	0	0	0	0	0	0	0
Totals	6	8	11	12	12	5	9	8	6	5	3	7
Mowlds	2013				2014				2015			
	Q1	Q2	Q3	Q4	Q1	Q2	Q3	Q4	Q1	Q2	Q3	Q4
Felony	14	14	15	13	10	10	15	19	16	17	13	13
Misdemeanor	11	4	6	6	5	6	4	5	10	7	4	4
VOP	9	5	9	11	9	9	12	14	5	4	7	7
Misdemeanor and VOP	0	0	0	0	0	0	0	0	1	0	0	0
Administrative	14	7	14	6	14	5	9	6	9	2	0	0
Other/Unknown	0	0	0	0	1	0	0	0	1	0	0	0
Totals	48	30	44	36	39	30	40	44	42	30	24	24
Snowden	2013				2014				2015			
	Q1	Q2	Q3	Q4	Q1	Q2	Q3	Q4	Q1	Q2	Q3	Q4
Felony	8	6	5	4	5	7	9	5	5	2	4	7
Misdemeanor	2	6	2	4	2	5	6	9	3	4	1	0
VOP	5	6	5	4	5	2	3	5	5	2	2	0
Misdemeanor and VOP	0	0	0	0	0	0	0	0	0	0	2	0
Administrative	0	0	0	0	0	0	0	0	0	0	0	0
Other/Unknown	0	0	0	0	0	0	0	0	0	0	0	0
Totals	15	18	12	12	12	14	18	19	13	8	9	7

Tables 16 and 17 display the demographic makeup of the Level 4 cottages. Table 16 shows that the majority of juveniles are Black (70% to 85%). Table 17 shows the age at admissions for each Level 4 cottage. Grace and Snowden have age at admission ranging from 12 to 19 while Mowlds ranges from 13 to 19. The majority of juveniles, for all three cottages, are between 15 and 17 years of age at time of admission.

*Table 16: Level 4 Admissions by Race and Ethnicity*

Grace		2013				2014				2015			
		Q1	Q2	Q3	Q4	Q1	Q2	Q3	Q4	Q1	Q2	Q3	Q4
Hispanic	Black	0	0	0	1	1	0	0	0	0	0	0	0
	White	0	0	0	0	0	0	0	0	1	1	0	0
	Other	0	0	0	0	0	0	0	0	0	0	0	0
	<i>Total</i>	<i>0</i>	<i>0</i>	<i>0</i>	<i>1</i>	<i>1</i>	<i>0</i>	<i>0</i>	<i>0</i>	<i>1</i>	<i>1</i>	<i>0</i>	<i>0</i>
Non-Hispanic	Black	6	7	8	11	10	5	7	7	3	3	3	4
	White	0	1	3	0	1	0	2	1	2	1	0	2
	Other	0	0	0	0	0	0	0	0	0	0	0	1
	<i>Total</i>	<i>6</i>	<i>8</i>	<i>11</i>	<i>11</i>	<i>11</i>	<i>5</i>	<i>9</i>	<i>8</i>	<i>5</i>	<i>4</i>	<i>3</i>	<i>7</i>
Mowlds		2013				2014				2015			
		Q1	Q2	Q3	Q4	Q1	Q2	Q3	Q4	Q1	Q2	Q3	Q4
Hispanic	Black	0	3	2	1	1	0	0	1	3	0	0	0
	White	4	2	2	3	2	2	3	6	4	3	2	1
	Other	0	0	0	0	0	0	0	0	0	0	0	0
	<i>Total</i>	<i>4</i>	<i>5</i>	<i>4</i>	<i>4</i>	<i>3</i>	<i>2</i>	<i>0</i>	<i>7</i>	<i>7</i>	<i>3</i>	<i>2</i>	<i>1</i>
Non-Hispanic	Black	35	20	31	25	31	25	35	32	33	22	15	18
	White	9	5	9	7	5	3	2	5	2	5	7	5
	Other	0	0	0	0	0	0	0	0	0	0	0	0
	<i>Total</i>	<i>44</i>	<i>25</i>	<i>40</i>	<i>32</i>	<i>36</i>	<i>28</i>	<i>37</i>	<i>37</i>	<i>35</i>	<i>27</i>	<i>22</i>	<i>23</i>
Snowden		2013				2014				2015			
		Q1	Q2	Q3	Q4	Q1	Q2	Q3	Q4	Q1	Q2	Q3	Q4
Hispanic	Black	1	0	0	0	1	0	0	1	0	0	0	0
	White	2	1	1	3	2	2	2	1	0	0	1	0
	<i>Total</i>	<i>3</i>	<i>1</i>	<i>1</i>	<i>3</i>	<i>3</i>	<i>2</i>	<i>2</i>	<i>2</i>	<i>0</i>	<i>0</i>	<i>1</i>	<i>0</i>
Non-Hispanic	Black	10	14	8	8	9	8	13	15	11	7	8	7
	White	2	3	3	1	0	4	3	2	2	1	0	0
	<i>Total</i>	<i>12</i>	<i>17</i>	<i>11</i>	<i>9</i>	<i>9</i>	<i>12</i>	<i>16</i>	<i>17</i>	<i>13</i>	<i>8</i>	<i>8</i>	<i>7</i>

Table 17: Level 4 Admissions by Age

Grace	2013				2014				2015			
	Q1	Q2	Q3	Q4	Q1	Q2	Q3	Q4	Q1	Q2	Q3	Q4
12	0	0	0	0	0	0	0	0	0	0	0	0
13	0	0	0	0	0	0	1	0	0	1	0	1
14	1	1	1	0	2	0	1	0	1	1	1	1
15	1	1	3	4	2	0	1	1	2	0	1	3
16	2	3	4	4	4	3	3	3	3	1	0	1
17	2	3	3	4	4	2	3	4	0	2	1	1
18-19	0	0	0	0	0	0	0	0	0	0	0	0
<b>Total</b>	<b>6</b>	<b>8</b>	<b>11</b>	<b>12</b>	<b>12</b>	<b>5</b>	<b>9</b>	<b>8</b>	<b>6</b>	<b>5</b>	<b>3</b>	<b>7</b>
Mowlds	2013				2014				2015			
	Q1	Q2	Q3	Q4	Q1	Q2	Q3	Q4	Q1	Q2	Q3	Q4
13	1	1	0	0	0	0	0	0	0	0	0	0
14	0	2	3	0	0	2	3	2	3	1	0	0
15	3	3	3	2	4	3	4	6	1	4	5	3
16	16	11	10	6	6	8	10	7	13	7	7	5
17	23	10	22	22	13	13	16	21	17	14	9	14
18-19	5	3	6	6	16	4	7	8	8	4	3	2
<b>Total</b>	<b>48</b>	<b>30</b>	<b>44</b>	<b>36</b>	<b>39</b>	<b>30</b>	<b>40</b>	<b>44</b>	<b>42</b>	<b>30</b>	<b>24</b>	<b>24</b>
Snowden	2013				2014				2015			
	Q1	Q2	Q3	Q4	Q1	Q2	Q3	Q4	Q1	Q2	Q3	Q4
12	0	0	0	0	0	0	0	0	0	0	0	0
13	0	2	2	0	0	0	0	2	1	0	1	2
14	4	0	2	5	1	3	4	4	4	3	1	2
15	4	8	4	3	4	4	4	6	4	1	2	0
16	5	5	2	2	6	5	7	6	3	4	4	2
17	2	3	2	2	1	2	3	1	1	0	1	1
18-19	0	0	0	0	0	0	0	0	0	0	0	0
<b>Total</b>	<b>15</b>	<b>18</b>	<b>12</b>	<b>12</b>	<b>12</b>	<b>14</b>	<b>18</b>	<b>19</b>	<b>13</b>	<b>8</b>	<b>9</b>	<b>7</b>

Tables 18, 19 and 20 describe the length of stay at release by offense type for each Level 4 facility. The average length of stay for youth at Grace and Snowden is 90 days, with an average of 6 weeks for Mowlds based on YRS programming and treatment services. Length of stays for Grace and Snowden were increased from 30 days to 90 days in August 2011 to encourage more effective treatment. Since those changes have been instituted, you can see that the majority of the population for 2013 through 2015 have releases from Grace and Snowden with a length of stay between 61 and 90 days or 3-6 months. Nearly 90% of juveniles released from Snowden in 2015 served from 31 days to 6 months. Nearly three quarters (74.2%) of juveniles released from Mowlds served 31 to 60 days, while 80.0% served between 61 days to 6 months at Grace.

Table 18: Grace Cottage Length of Stay by Offense Type

Grace	1 Day	2-5 Days	6-10 Days	11-15 Days	16-20 Days	21-30 Days	31-60 Days	61-90 Days	3-6 Months	6-12 Months
2013	Felony							4	2	
	Misdemeanor		4			1		12	1	
	VOP		1	1			1	5	1	
	Misdemeanor and VOP									
	Administrative Drug Court		9		1					1
2014	Felony		1			1	1	2		
	Misdemeanor			1		2	1	3	3	
	VOP		2		1	1	6	4	1	
	Misdemeanor and VOP									
	Administrative Drug Court		4							
2015	Felony		1				1	6	3	
	Misdemeanor	1						3	2	
	VOP					1		1		
	Misdemeanor and VOP									
	Administrative Drug Court									

Table 19: Mowlds Cottage Length of Stay by Offense Type

Mowlds	1 Day	2-5 Days	6-10 Days	11-15 Days	16-20 Days	21-30 Days	31-60 Days	61-90 Days	3-6 Months	6-12 Months
2013	Felony					3	37	2	1	
	Misdemeanor					2	37			
	VOP	1			4	1	24	2		
	Misdemeanor and VOP									
	Administrative Drug Court		43							
2014	Felony		3	1	2		10	37	2	
	Misdemeanor		1		2	1	2	14		
	VOP		2	1	2	1	2	33	3	
	Misdemeanor and VOP									
	Administrative Drug Court		34					1		
2015	Felony		3			1	55	2		
	Misdemeanor		2			1	20	2		
	VOP		3	1		1	1	19		
	Misdemeanor and VOP									
	Administrative Drug Court		11							1

Table 20: Snowden Cottage Length of Stay by Offense Type

SNOWDEN	1 Day	2-5 Days	6-10 Days	11-15 Days	16-20 Days	21-30 Days	31-60 Days	61-90 Days	3-6 Months
2013	Felony	1		1	1	1	1	4	12
	Misdemeanor					1	1	4	7
	VOP	1		1		1	1	7	7
	Misdemeanor and VOP								
	Administrative								1
2014	Felony				1	5	10	7	3
	Misdemeanor		1	1		3	8	5	4
	VOP				2	1	3	4	5
	Misdemeanor and VOP								
	Administrative								
2015	Felony	1						5	7
	Misdemeanor							1	11
	VOP						2		7
	Misdemeanor and VOP								6
	Administrative								3

**Section 4: Summary**

This review provides only a cursory look at YRS populations. While the admissions, snapshot picture and average daily population numbers for each facility increase and decrease multiple times from first quarter 2013 through the fourth quarter of 2015, there do seem to be some constants. The age at admission is most likely between 15 and 17, and the admitted juvenile is more than 65% likely to be black and 80% likely to be male. Further exploration and continued in-depth analysis is required to fully understand the underlying causes with respect to this demographic information.

