
YRS Facility Populations

by Quarter for 2010-2012 Third Quarter



January 2013

**Prepared by State of
Delaware Criminal
Justice Council**

STATISTICAL ANALYSIS CENTER

YRS Facility Populations

by Quarter for 2010-2012 Third Quarter

**Thomas F. MacLeish, Director
Statistical Analysis Center**

**Author:
Brie A. Gannon
Philisa J. Weidlein-Crist**

**Data Collection and Preparation:
April Schmitt
Sarah M. Hoffman
Charles J. Huenke**

This report is supported by the Bureau of Justice Assistance – Office of Juvenile Justice and Delinquency Prevention Grant Number 2010-JF-FX 0055.

This report is supported by the Bureau of Justice Statistics - State Justice Statistics Grant Number 2008-BJ-CX-K022.

The points of view expressed in this document do not necessarily represent the official position of the United States Department of Justice.

State of Delaware Document number 100703 130101

Please visit our website @ <http://cjc.delaware.gov/sac/publications.shtm>

YRS Facility Populations by Quarter for 2010-2012 Third Quarter

YRS facility population information was obtained from YRS for admissions and release to Secure Detention, Level 5 and Level 4 facilities for calendar years 2010 through first quarter 2012. In addition to this information, YRS also provided case numbers linked to each admission and release to identify why each placement occurred.

Using YRS data provided, SAC compiled the admissions and releases, and removed all internal transfers. An internal transfer from one facility to another within the same Level is used for various reasons including case processing and safety. These are not new admissions to a facility, and should not be counted as such. For this reason, New Castle County Detention Center and Stevenson House information will be combined for the purposes of reporting population information. Many transfers occur between these two facilities. Displaying the populations by facility would not be valid as the admissions and releases would not balance with the snapshot population by facility. By combining the facilities, the complications of admission to NCCDC but release from Stevenson House or vice versa are not visible. Moreover, a word of caution is urged when comparing this quarterly data to previous provided quarterly data. The extent to which internal transfers were counted previously is unknown, and so comparisons cannot be made between current and previous reports.

To identify the reason for each placement at Secure Detention, Level 5 and Level 4, SAC used the case information provided by YRS in addition to CJIS and JIC to label each placement either a Felony, Misdemeanor, VOP, Misdemeanor and VOP, Drug Court Sanction, Failure to Appear (FTA) or Failure to Pay (FTP), Sentence Review/ Status Hearing, Administrative or Other/Unknown. The other/unknown category contains juveniles held for Truancy, Material Witness, INS detainees, no case information found for stay or no SBI information found, along with other infrequent reasons such as a judge's order. The type of stay for the years 2010 and 2011 have changed slightly from previous reporting due to a more in depth review of each juveniles' charges. The majority of changes occurred upon closer evaluation of the Misdemeanor/VOP category. In which the stay types were redistributed, in many cases, to either a Misdemeanor or a VOP.

The final component of this report is juvenile demographic information. Race, Ethnicity, Sex and Age are included in most sections. Race is broken into Black, White and Other. The Other category includes Asian and American Indian/Alaskan Native. These two groups were combined for the Other category because the numbers were small. Ethnicity includes Hispanic and Non-Hispanic, and is combined with Race for some tables. Sex is displayed only for Secure Detention information because these are the only mixed gender institutions. Grace Cottage, Level 4, is an all girls facility, but the other Level 5 and Level 4 treatment facilities are male only. Age at admission is displayed for each level and ranges from 9 up to 19.

The overall YRS population has increased by 5.6% from second quarter 2012 to third quarter 2012. Table 1 illustrates that Secure Detention admissions have increased 17.2% from first quarter 2012 to third quarter 2012. Level 5 admissions have increased 1.0%, while Level 4 admissions decreased 16.0% from first to third quarter 2012. Table 2 shows an overall increase in releases from first quarter 2012 through third quarter 2012. The next sections are grouped by Secure Detention, Level 5 and Level 4 and provide more detailed admission, release and snapshot information.

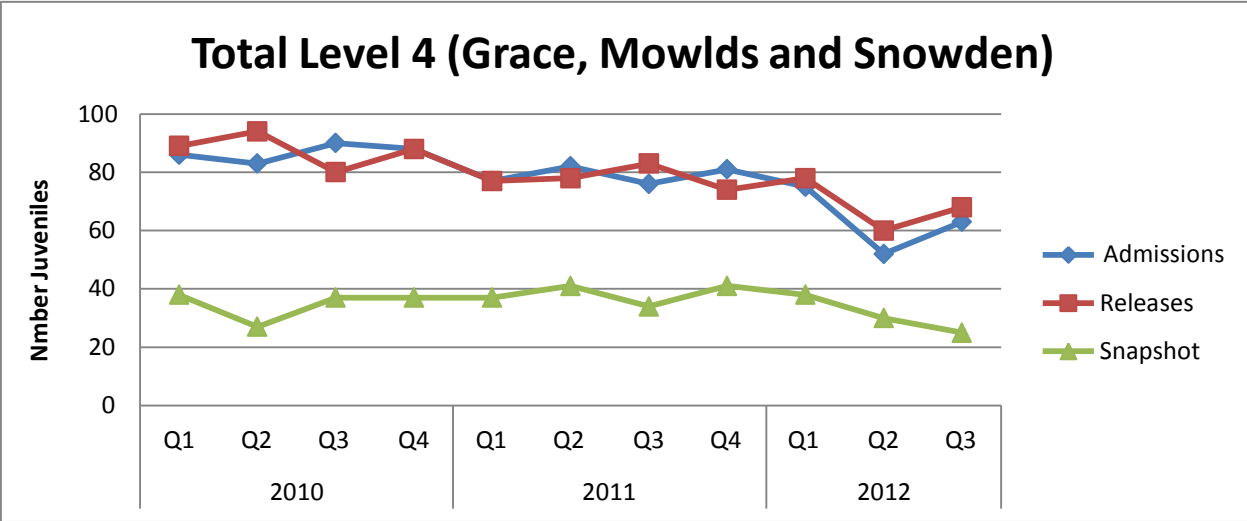
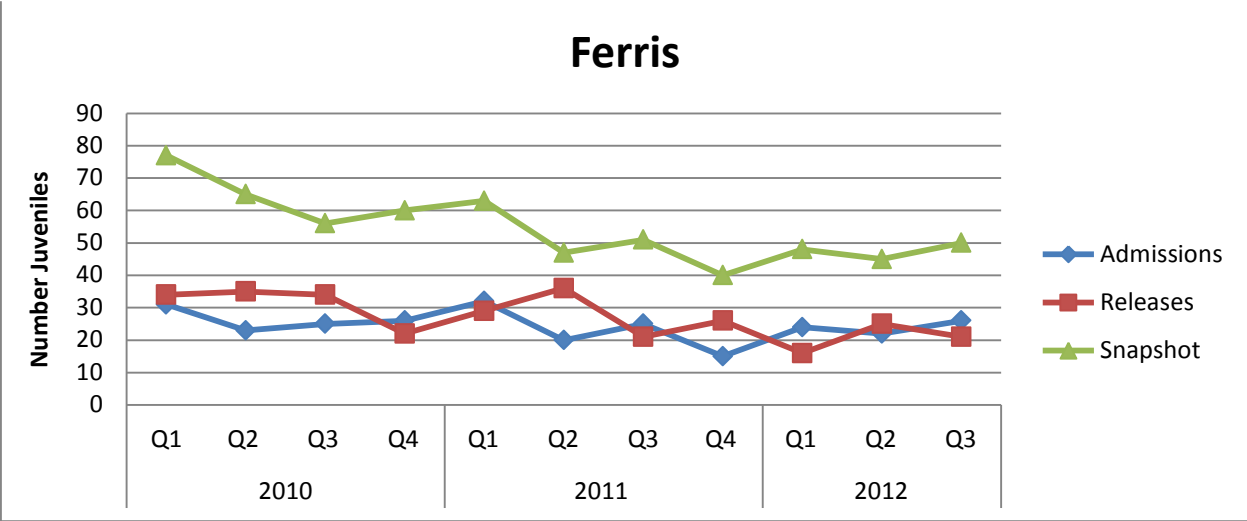
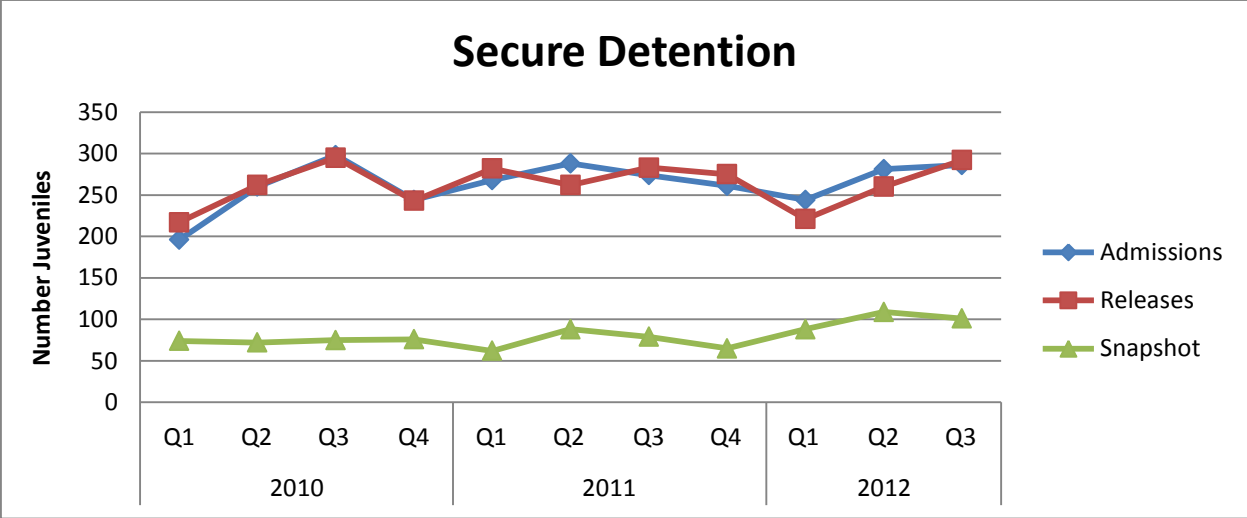
Table 1: YRS Facility Admissions for 2010-2012 Third Quarter

		2010				2011				2012			
		Q1	Q2	Q3	Q4	Q1	Q2	Q3	Q4	Q1	Q2	Q3	Q4
SD	Secure Detention	196	260	298	244	268	288	274	261	244	281	286	
L5	FERRIS	31	23	25	26	32	20	25	15	24	22	26	
L4	GRACE	11	11	11	13	13	19	10	19	11	6	10	
	MOWLDS	50	47	45	51	49	44	51	45	48	34	42	
	SNOWDEN	25	25	34	24	15	19	15	17	16	12	11	
	Total L4	86	83	90	88	77	82	76	81	75	52	63	

Table 2: YRS Facility Releases for 2010-2012 Third Quarter

		2010				2011				2012			
		Q1	Q2	Q3	Q4	Q1	Q2	Q3	Q4	Q1	Q2	Q3	Q4
SD	Secure Detention	217	262	295	243	282	262	283	275	221	260	292	
L5	FERRIS	34	35	34	22	29	36	21	26	16	25	21	
L4	GRACE	12	14	7	11	15	15	18	13	11	11	9	
	MOWLDS	51	50	45	53	43	46	49	46	48	38	44	
	SNOWDEN	26	30	28	24	19	17	16	15	19	11	15	
	Total L4	89	94	80	88	77	78	83	74	78	60	68	

The next three graphs show admissions, releases and the snapshot population for Secure Detention, Ferris and Level 4 Cottages (combined) for 2010 -2012 3rd Quarter. Secure Detention and the Level 4 Cottages have seen relatively level increases and decreases in their snapshot population since 1st Quarter 2010. Ferris has had a steady decrease in their snapshot numbers from 1st Quarter 2010 through 1st Quarter 2012. The most drastic decrease being directly related to the increase in releases and decrease in admissions for 2nd Quarter 2011.



Section 1: Secure Detention

As previously stated, Secure Detention is comprised of New Castle County Detention Center (NCCDC), a 64 bed secure facility, and William Marion Stevenson House Detention Center (Stevenson House), a 55 capacity secure facility. Both lock-secure facilities house non-adjudicated male and female youths and provide academic education, psycho-education programs, medical, dental and psychological services.

Table 3 shows Secure detention admissions decreased slightly (7.3%) from 2nd Quarter 2012 to 3rd Quarter 2012. In addition, Secure Detention average daily population decreased by 7.8% between 2nd Quarter 2012 and 3rd Quarter 2012. Prior to January 1, 2010, there were 95 juveniles in Secure Detention. Snapshot populations are a look at who was in a facility on the last day of the quarter. Second Quarter 2012 houses the highest snapshot population with 3rd Quarter 2011 having the greatest average daily population. Average Daily Population is presented to show a more accurate picture of the facility population for the entire quarter.

Table 3: Secure Detention Quarterly Snapshots 2010-2012 Third Quarter

	2010				2011				2012			
	Q1	Q2	Q3	Q4	Q1	Q2	Q3	Q4	Q1	Q2	Q3	Q4
Secure Detention	74	72	75	76	62	88	79	65	88	109	101	
Average Daily Population	85.7	71.9	78.5	86.6	79.7	71.2	91.6	72.5	75.4	90.6	83.5	

The following tables pertain to Secure Detention Admissions by quarter for 2010-2012 3rd Quarter. Table 4 describes the category of offense for which the juvenile was detained. On average, across quarters, felony detention admissions make up 38% of the reasons juveniles are detained. Felonies accounted for 40% of detained admissions for both the 2nd and 3rd Quarter of 2012. Misdemeanors make up 33% and VOP's contribute 18.2% of detained admissions for Quarter three 2012. The remaining detained admissions are spread among the other six categories and comprise 8.0% of detention admissions for this most recent quarter.

Table 4: Secure Detention Admissions by Offense Type

Admission Type	2010				2011				2012			
	Q1	Q2	Q3	Q4	Q1	Q2	Q3	Q4	Q1	Q2	Q3	Q4
Felony	86	106	138	115	121	115	108	107	93	113	116	
Misdemeanor	38	60	59	50	54	73	64	59	59	87	95	
VOP	48	61	64	57	44	64	62	60	56	60	52	
Misdemeanor and VOP	7	13	11	6	7	10	11	9	32	8	5	
Drug Court Sanction	1	2	4	3	11	2	6	3	2	6	5	
FTA or FTP	3	3	10	5	3	1	3	7	0	2	3	
Sentence Review/ Status Hearing	3	5	3	0	8	3	6	3	0	2	0	
Administrative	9	9	6	6	17	15	12	7	1	1	7	
Other/Unknown	1	1	3	2	3	5	2	6	1	2	3	
Total	196	260	298	244	268	288	274	261	244	281	286	

Table 5, Table 6 and Table 7 display demographic information for Secure Detention admissions. Table 5 shows that the majority of Secure Detention admissions are Black juveniles (60%-75%). Hispanic juveniles make up only 10.0% of secure detention admissions for Quarter three of 2012. Table 6 illustrates that Females comprise 20% to 33% of Secure Detention admissions, with a slight increase in female admissions from the second to third quarter of 2012 of 6.1%. Table 7 displays age at admission to Secure Detention. Few offenders are admitted prior to age 14. The majority of juveniles admitted to Secure Detention were between 15 and 17 years old.

Table 5: Secure Detention Admissions by Race & Ethnicity

SD		2010				2011				2012			
		Q1	Q2	Q3	Q4	Q1	Q2	Q3	Q4	Q1	Q2	Q3	Q4
Hispanic	Black	14	2	8	8	2	1	3	5	3	5	4	
	White	24	22	18	14	20	17	12	14	10	21	25	
	Other	1	0	0	0	0	0	0	0	0	0	0	
	Total	39	24	26	22	22	18	15	19	13	26	29	
Non-Hispanic	Black	269	212	200	184	232	171	180	178	180	194	202	
	White	91	74	72	68	88	55	49	64	51	61	55	
	Other	2	1	0	0	2	0	0	0	0	0	0	
	Total	362	287	272	252	322	226	229	242	231	255	257	

Table6: Secure Detention Admissions by Gender

	2010				2011				2012			
	Q1	Q2	Q3	Q4	Q1	Q2	Q3	Q4	Q1	Q2	Q3	Q4
Female	42	43	59	47	62	67	58	64	46	66	70	
Male	154	217	239	197	206	221	216	197	198	215	216	
% Female	27.3%	19.8%	24.7%	23.9%	30.1%	30.3%	26.9%	32.5%	18.9%	23.5%	24.5%	

Table 7: Age at Admission to Secure Detention

SD	2010				2011				2012			
	Q1	Q2	Q3	Q4	Q1	Q2	Q3	Q4	Q1	Q2	Q3	Q4
9-10	0	0	0	0	0	0	0	0	0	0	0	
11	0	0	0	0	0	0	0	2	1	0	1	
12	2	4	2	4	7	3	3	2	2	2	4	
13	9	20	14	10	7	11	6	16	12	19	12	
14	21	40	30	30	38	38	40	28	23	35	36	
15	39	62	73	51	56	63	50	60	55	59	68	
16	52	59	80	70	68	75	78	66	60	79	64	
17	67	67	93	72	86	89	93	81	83	80	98	
18-19	6	8	6	7	6	9	4	6	8	7	3	
Total	196	260	298	244	268	288	274	261	244	281	286	

The final table for Secure Detention, Table 8, displays Secure Detention releases by detention type and length of stay per year. The exception being 2012, in which the numbers represent only the length of stay for those released in the first through third quarters. The overwhelming majority of juveniles spend less than 30 days in detention (73.4%). Of those juveniles who spend more than 30 days in detention, the detention stays are for Felony, VOP, or Misdemeanor and VOP offenses. Very few juveniles spend more than 30 days in Secure Detention for Administrative Holds or Sentence Reviews.

Table 8: Secure Detention by Offense Type and Length of Stay

	1 Day	2-5 Days	6-10 Days	11-15 Days	16-20 Days	21-30 Days	31-60 Days	61-90 Days	3-6 Months	6-12 Months	1-1.5 Years	1.5-2 Years	
2010	Felony	28	82	45	34	27	46	106	42	34	11	4	1
	Misdemeanor	22	54	27	22	12	32	34	9	2			
	VOP	7	42	46	31	20	35	39	9	1			
	Misdemeanor and VOP	4	4	4	1	4	7	8	1	1			
	Drug Court Sanction		9	1									
	FTA/FTP Sent	6	5	2	1		3	2	3				
	Rev/ Stat Hearing	1	2	5			2	1					
	Administrative		4	4	6	3	3	4	1	4			
	Other/Unknown		4			2	1						
	Total Releases	68	206	134	95	68	129	194	65	42	11	4	1
% of Total Releases	6.7	20.3	13.2	9.3	6.7	12.6	19.1	6.4	4.1	1.1	0.3	<0.1	
2011	Felony	47	100	16	34	27	41	88	38	46	24		
	Misdemeanor	45	90	32	24	14	22	19	2	2			
	VOP	12	28	49	27	26	45	30	9	4			
	Misdemeanor and VOP	0	5	4	7	3	7	7	4	1			
	Drug Court Sanction	1	17	3			1						
	FTA/FTP Sent	2	10	1			1						
	Rev/ Stat Hearing		6	5	2	1	5						
	Administrative		10	8	4	6	9	9	3	2	1		
	Other/Unknown	1	5	4	1	2	3						
	Total Releases	108	271	122	99	79	134	153	56	55	25	0	0
% of Total Releases	9.8	24.6	11.9	8.9	7.2	12.1	13.9	5.1	4.9	2.3	0.0	0.0	
Three Fourths Year 2012	Felony	22	50	20	15	22	32	62	26	33	12	1	
	Misdemeanor	28	82	24	14	23	24	21	8	5			
	VOP	9	33	26	25	17	34	21	3	1			
	Misdemeanor and VOP	1	10	3	3	8	6	8	6	1			
	Drug Court Sanction		4	7			1	1					
	FTA/FTP Sent	1	1				1						
	Rev/ Stat Hearing		1			1		1		1			
	Administrative	2	7	1		2							
	Other/Unknown			1			1						
	Total Releases	36	116	46	35	44	76	65	30	23	9	1	0
% of Total Releases	7.5	24.1	9.5	7.3	9.1	15.8	13.5	6.2	4.8	1.9	<0.1	0.0	

Section 2: Level 5 Ferris

Ferris is the YRS Level 5 facility that provides intensive rehabilitative treatment services for up to 72 male youth. Ferris saw an increase in admissions from 2nd Quarter 2012 to 3rd Quarter 2012 of 18.2%. Table 9 shows snapshot populations by quarter for Ferris along with average daily population. Even though the average daily population increased in the most recent quarter, it is down drastically from 1st Quarter 2010. The population of Ferris prior to January 1, 2010 was 80.

Table 9: Ferris Snapshot Population by Quarter

	2010				2011				2012			
	Q1	Q2	Q3	Q4	Q1	Q2	Q3	Q4	Q1	Q2	Q3	Q4
FERRIS	77	65	56	60	63	47	51	40	48	45	50	
Average Daily Population	77.9	68.8	59.7	59.3	60.8	52.8	49.8	47.4	44.8	49.8	51.4	

The next tables display information regarding Ferris admissions from 2010 to 3rd Quarter 2012. Table 10 shows the lead offense that caused the admission to Ferris by admission quarter. On average 56% of juveniles are admitted to Ferris for Felony convictions, with some quarters as high as 70% and 4th Quarter 2011 with a low of 26.7%.

Table 10: Ferris Admissions by Admission Offense Type

Ferris	2010				2011				2012			
	Q1	Q2	Q3	Q4	Q1	Q2	Q3	Q4	Q1	Q2	Q3	Q4
Felony	21	10	14	17	23	11	12	4	12	11	17	
Misdemeanor	3	6	6	3	2	4	7	0	2	3	5	
VOP	5	7	5	6	6	5	5	10	6	7	3	
Misdemeanor and VOP	2	0	0	0	1	0	1	1	4	1	0	
Administrative	0	0	0	0	0	0	0	0	0	0	1	
Totals	31	23	25	26	32	20	25	15	24	22	26	

Table 11 and Table 12 explain the demographic make-up of Ferris admissions. Like Secure Detention, Ferris admissions are overwhelmingly Black (70% to 90%) and Non-Hispanic (80% or more). Table 12 describes the age of juveniles admitted to Ferris, which range in age from 13 to 19 years old. The majority of juveniles admitted to Ferris are 16 or 17.

Table 11: Ferris Admissions by Race and Ethnicity

Ferris		2010				2011				2012			
		Q1	Q2	Q3	Q4	Q1	Q2	Q3	Q4	Q1	Q2	Q3	Q4
Hispanic	Black	0	2	1	1	0	1	1	1	1	0	1	
	White	1	2	0	0	1	0	0	0	0	0	3	
	Other	0	0	0	0	0	0	0	0	0	0	0	
	<i>Total</i>	<i>1</i>	<i>4</i>	<i>1</i>	<i>1</i>	<i>1</i>	<i>1</i>	<i>1</i>	<i>1</i>	<i>1</i>	<i>0</i>	<i>4</i>	
Non-Hispanic	Black	26	14	18	22	24	18	15	11	19	21	16	
	White	4	5	6	3	8	1	9	3	4	1	6	
	Other	0	0	0	0	0	0	0	0	0	0	0	
	<i>Total</i>	<i>30</i>	<i>19</i>	<i>24</i>	<i>25</i>	<i>32</i>	<i>19</i>	<i>24</i>	<i>14</i>	<i>23</i>	<i>22</i>	<i>22</i>	

Table 12: Ferris Admissions by Age at Admission

Ferris	2010				2011				2012			
	Q1	Q2	Q3	Q4	Q1	Q2	Q3	Q4	Q1	Q2	Q3	Q4
13	0	0	1	0	0	0	0	0	0	0	0	0
14	1	4	4	0	1	1	0	0	0	1	0	0
15	7	3	6	9	3	5	4	0	5	2	5	5
16	10	6	5	9	12	7	10	5	7	9	12	12
17	9	7	8	6	12	7	10	9	9	8	7	7
18-19	4	3	1	2	4	0	1	1	3	2	2	2
<i>Total</i>	<i>31</i>	<i>23</i>	<i>25</i>	<i>26</i>	<i>32</i>	<i>20</i>	<i>25</i>	<i>15</i>	<i>24</i>	<i>22</i>	<i>26</i>	<i>26</i>

The last table for Level 5 illustrates the length of stay for offenses for juveniles released at any time during that year. The exception being 2012, in which the numbers represent only the length of stay for those released within the first three quarters. Table 13 shows that the majority of juveniles spent between 3 months and 12 months at Ferris for Felony convictions prior to 2012. In 2012 the majority of juveniles spend 6-12 months at Ferris for a felony conviction. Less than 6% spend more than 1 year at Ferris for any offenses. There were 62 juveniles released from Ferris thus far in 2012, of which 50% had a stay associated with a felony conviction.

Table 13: Ferris Length of Stay at Release by Offense Type

Level 5	1 Day	21-30 Days	31-60 Days	61-90 Days	3-6 Months	6-12 Months	1-1.5 Years	1.5-2 Years	2-2.5 Years
2010	Felony	1		1	24	51	6		
	Misdemeanor				12	5			
	VOP				3	20			
	Misdemeanor and VOP				1	1			
2011	Felony			1	27	37	7	1	
	Misdemeanor				12	2	1		
	VOP				17	6			
	Misdemeanor and VOP				1				
Three Fourths Year 2012	Felony		1		5	23	2	1	
	Misdemeanor				3	2			
	VOP				8	9			
	Misdemeanor and VOP				2	6			

Section 3: Level 4 Cottages: Grace, Mowlds and Snowden

YRS Level 4 facilities include Grace Cottage, Mowlds Cottage and Snowden Cottage. Grace houses only females with a 14 youth capacity. Mowlds Cottage, with a 16 youth capacity, houses male youth transitioning from Ferris School and short-term commitments for Aftercare supervision direct from Family Court. Snowden Cottage has a 15 male youth capacity. Table 14 shows the snapshot populations by quarter for each facility and the average daily population per quarter. Level 4 cottages have not seen any dramatic shifts in their snapshot numbers. Populations by cottage have remained fairly consistent with Grace and Mowlds showing a slight increase in average daily population, while Snowden shows a very slight decrease from 2nd to 3rd Quarter 2012.

Table14: Level 4 Snapshot Populations by Quarter

	2010				2011				2012			
	Q1	Q2	Q3	Q4	Q1	Q2	Q3	Q4	Q1	Q2	Q3	Q4
GRACE	6	3	7	9	7	11	3	9	9	4	5	
Average Daily Population	6.3	7.4	4.3	8.3	7.3	10.0	8.1	5.4	9.3	5.0	6.2	
MOWLDS	17	14	14	12	18	16	18	17	17	13	11	
Average Daily Population	18.6	15.5	14.7	14.7	15.9	15.4	16.4	15.1	14.9	11.6	12.4	
SNOWDEN	15	10	16	16	12	14	13	15	12	13	9	
Average Daily Population	15.4	14.5	14.7	15.5	14.8	13.8	12.1	14.5	12.9	13.3	13.0	

Table 15 shows admissions to Level 4 facility by type of offense. Grace has had a 66.6% increase in admissions from 2nd Quarter 2012 to 3rd Quarter 2012. Of the 3rd Quarter admissions to Grace, 40% were for a Felony conviction. Mowlds Cottage houses the largest number of juveniles admitted for a Felony due to the flow of youth to Mowlds from Ferris. Offenders admitted to Snowden are admitted for a Felony 27.2% percent of the time in 3rd Quarter 2012, with the majority of juveniles (63.6%) admitted to Snowden for a Misdemeanor, VOP or combination thereof.

Table 15: Level 4 Admissions by Offense Type and Facility

Grace	2010				2011				2012			
	Q1	Q2	Q3	Q4	Q1	Q2	Q3	Q4	Q1	Q2	Q3	Q4
Felony	0	1	1	2	1	1	0	0	2	2	4	
Misdemeanor	2	3	3	4	2	1	2	4	3	1	1	
VOP	5	5	5	7	5	11	2	4	3	1	2	
Misdemeanor and VOP	0	0	1	0	0	1	1	1	2	0	0	
Administrative	4	2	1	0	5	5	5	10	1	2	3	
Other/Unknown	0	0	0	0	0	0	0	0	0	0	0	
Totals	11	11	11	13	13	19	10	19	11	6	10	
Mowlds	2010				2011				2012			
	Q1	Q2	Q3	Q4	Q1	Q2	Q3	Q4	Q1	Q2	Q3	Q4
Felony	26	19	22	9	17	16	16	17	10	9	11	
Misdemeanor	5	10	5	11	9	5	7	6	8	6	5	
VOP	10	7	7	11	12	13	8	9	12	10	10	
Misdemeanor and VOP	0	0	1	0	2	0	1	1	3	1	5	
Administrative	9	11	10	20	9	10	19	12	13	7	11	
Other/Unknown	0	0	0	0	0	0	0	0	2	1	0	
Totals	50	47	45	51	49	44	51	45	48	34	42	
Snowden	2010				2011				2012			
	Q1	Q2	Q3	Q4	Q1	Q2	Q3	Q4	Q1	Q2	Q3	Q4
Felony	5	3	8	6	5	9	6	6	5	4	3	
Misdemeanor	9	7	13	8	7	4	6	8	1	4	4	
VOP	10	13	13	9	2	5	3	3	6	2	3	
Misdemeanor and VOP	1	2	0	0	1	1	0	0	3	1	0	
Administrative	0	0	0	1	0	0	0	0	1	0	0	
Other/Unknown	0	0	0	0	0	0	0	0	0	1	1	
Totals	25	25	34	24	15	19	15	17	16	12	11	

Tables 16 and 17 display the demographic makeup of the Level 4 cottages. Table 16 shows that the majority of juveniles are Black (70% to 85%). Table 17 shows the age at admissions for each Level 4 cottage. Grace and Snowden have age at admission ranging from 12 to 19 while Mowlds ranges from 13 to 19. The majority of juveniles, for all three cottages, are between 15 and 17 years of age at time of admission.

Table 16: Level 4 Admissions by Race and Ethnicity

Grace		2010				2011				2012			
		Q1	Q2	Q3	Q4	Q1	Q2	Q3	Q4	Q1	Q2	Q3	Q4
Hispanic	Black	0	1			0	0	1		0	0	0	
	White	3	0			1	2	2		0	0	0	
	<i>Total</i>	3	1			1	2	3		0	0	0	
Non-Hispanic	Black	14	22	8	8	13	15	9	8	8	6	9	
	White	9	6	2	2	11	4	2	8	3	0	1	
	<i>Total</i>	23	28	10	10	24	19	11	16	11	6	10	
Mowlds		2010				2011				2012			
		Q1	Q2	Q3	Q4	Q1	Q2	Q3	Q4	Q1	Q2	Q3	Q4
Hispanic	Black	2	0	1	0	2	4	4	1	0	3	1	
	White	9	3	1	1	7	3	5	1	5	2	0	
	Other	0	0	0	0	0	0	0	0	0	0	0	
	<i>Total</i>	11	3	2	1	9	7	9	2	5	5	1	
Non-Hispanic	Black	42	40	38	40	46	36	37	38	33	26	37	
	White	10	9	5	10	14	13	5	5	10	3	4	
	Other	0	1	0	0	0	0	0	0	0	0	0	
	<i>Total</i>	52	50	43	50	60	49	42	43	43	29	41	
Snowden		2010				2011				2012			
		Q1	Q2	Q3	Q4	Q1	Q2	Q3	Q4	Q1	Q2	Q3	Q4
Hispanic	Black	0	3	1	0	0	0	1	1	0	1	0	
	White	3	2	3	1	1	1	2	1	0	0	1	
	<i>Total</i>	3	5	4	1	1	1	3	2	0	1	1	
Non-Hispanic	Black	20	18	20	10	19	24	17	11	13	5	8	
	White	3	5	10	4	8	2	4	4	3	6	2	
	<i>Total</i>	23	23	30	14	27	26	21	15	16	11	10	

Table 17: Level 4 Admissions by Age

Grace	2010				2011				2012			
	Q1	Q2	Q3	Q4	Q1	Q2	Q3	Q4	Q1	Q2	Q3	Q4
12	1	0	1	0	0	0	0	0	0	0	0	0
13	0	1	1	3	1	1	1	1	1	0	0	0
14	3	2	2	3	2	3	0	1	0	1	1	1
15	2	1	2	1	3	3	1	2	1	1	2	2
16	3	3	3	3	4	3	4	9	6	1	2	2
17	2	4	1	2	3	9	4	6	3	3	5	5
18-19	0	0	1	1	0	0	0	0	0	0	0	0
Total	11	11	11	13	13	19	10	19	11	6	10	
Mowlds	2010				2011				2012			
	Q1	Q2	Q3	Q4	Q1	Q2	Q3	Q4	Q1	Q2	Q3	Q4
13	0	0	0	0	0	0	1	0	0	0	0	0
14	1	2	3	4	4	0	1	1	0	0	1	1
15	5	5	4	11	10	6	2	4	6	2	7	7
16	18	11	13	16	15	11	18	16	13	7	5	5
17	19	19	18	11	12	19	27	18	22	19	23	23
18-19	7	10	7	9	8	8	2	6	7	6	6	6
Total	50	47	45	51	49	44	51	45	48	34	42	
Snowden	2010				2011				2012			
	Q1	Q2	Q3	Q4	Q1	Q2	Q3	Q4	Q1	Q2	Q3	Q4
12	0	0	0	0	0	0	0	0	0	0	0	0
13	0	2	2	0	2	1	0	1	0	0	1	1
14	1	3	6	1	5	6	5	5	1	3	2	2
15	7	8	12	7	4	5	3	4	6	1	5	5
16	12	3	10	7	4	4	6	3	6	4	1	1
17	5	9	4	8	0	3	1	4	3	4	2	2
18-19	0	0	0	1	0	0	0	0	0	0	0	0
Total	25	25	34	24	15	19	15	17	16	12	11	

Tables 18, 19 and 20 describe the length of stay at release by offense type for each Level 4 facility. The average length of stay at Grace for youth is 90 days, 90 days for Snowden and an average of 6 weeks for Mowlds based on YRS programming and treatment services. Length of stays for Grace and Snowden were increased from 30 days to 90 days in August 2011 to encourage more effective treatment. Since those changes have been instituted, you can see that the majority of the population for 1st and 2nd Quarter 2012 releases from Grace and Snowden had a length of stay between 61 and 90 days or 3-6 months. Nearly 90% of juveniles released from Snowden in the first three quarters of 2012 served from 31 days to 6 months. Approximately 36% of juveniles served 30 days or less at Mowlds Cottage while 64% served between 31 days and 6 months.

Table 18: Grace Cottage Length of Stay by Offense Type

Grace	1 Day	2-5 Days	6-10 Days	11-15 Days	16-20 Days	21-30 Days	31-60 Days	61-90 Days	3-6 Months	6-12 Months
2010	Felony					1	1		1	
	Misdemeanor				1	4	3	1	2	
	VOP				2	3	7	9	1	
	Misdemeanor and VOP						1			
	Administrative		6	1						
2011	Felony						1		3	
	Misdemeanor		1		1	2		2	2	1
	VOP						5	11	6	
	Misdemeanor and VOP							1	1	
	Administrative	1	23							
Three Fourths Year 2012	Felony						1	1	4	
	Misdemeanor		1					4		
	VOP					1		6	3	
	Misdemeanor and VOP				1			1	1	
	Administrative		6							

Table 19: Mowlds Cottage Length of Stay by Offense Type

Mowlds		1 Day	2-5 Days	6-10 Days	11-15 Days	16-20 Days	21-30 Days	31-60 Days	61-90 Days	3-6 Months	6-12 Months
2010	Felony			2	2		3	73			
	Misdemeanor	1		1	1		2	22			
	VOP		1	2	4		2	31			
	Misdemeanor and VOP							3			
	Administrative		43	3	2		1				
2011	Felony			2			2	54			
	Misdemeanor				1	1		32			
	VOP			2			3	34	1		
	Misdemeanor and VOP							3			
	Administrative		49	1							
Three Fourths Year 2012	Felony		3		1			33		1	
	Misdemeanor		1		2			11			
	VOP		5					31			
	Misdemeanor and VOP						1	7			
	Administrative	1	31								
	Drug Court		2								

Table 20: Snowden Cottage Length of Stay by Offense Type

SNOWDEN		1 Day	2-5 Days	6-10 Days	11-15 Days	16-20 Days	21-30 Days	31-60 Days	61-90 Days	3-6 Months
2010	Felony						4	5	10	1
	Misdemeanor	1			1		13	10	15	
	VOP			1	2	1	21	7	11	
	Misdemeanor and VOP						2		1	1
	Administrative		1							
2011	Felony					1	2	5	10	8
	Misdemeanor			1		1	1	3	10	6
	VOP				1		2	1	7	6
	Misdemeanor and VOP								1	1
Three Fourths Year 2012	Felony							3	1	11
	Misdemeanor			1					1	11
	VOP		1					2		7
	Misdemeanor and VOP						1			4
	Administrative		1							1

Section 4: Summary

This review provides only a cursory look at YRS populations. While the admissions, snapshot picture and average daily population numbers for each facility increase and decrease multiple times from first quarter 2010 through third quarter 2012, there do seem to be some constants. The age at admission is most likely between 15 and 17, and the admitted juvenile is more than 65% likely to be black and 80% likely to be male. Further exploration and continued in-depth analysis is required to fully understand the underlying causes with respect to this demographic information.

STATE OF DELAWARE
EXECUTIVE DEPARTMENT
CRIMINAL JUSTICE COUNCIL
STATISTICAL ANALYSIS CENTER
410 FEDERAL STREET, SUITE # 6
DOVER, DELAWARE 19901