

Delaware Statistical Analysis Center

Crime in Delaware: 2008-2012 Wilmington Data Supplement

Data Tables and Figures

October 2013

Prepared by the
Statistical Analysis Center
Delaware Criminal Justice Council
In Conjunction with the State
Bureau of Identification

Crime in Delaware: 2008 – 2012

Wilmington Data Supplement

Thomas F. MacLeish
Director

Author:
Jim Salt

The full *Crime in Delaware 2008 – 2012* report is available at:

<http://cjc.delaware.gov/sac/publications/crime.shtml>

This report is supported by the State Justice Statistics Grant Number 2008-BJ-CX-K041.

The points of view expressed in this document do not necessarily represent the official position of the United States Department of Justice.

State of Delaware Document number 100703 131001

Please visit our website at <http://cjc.delaware.gov/sac/publications/crime.shtml>

Crime in Delaware: 2008 – 2012 is the official report of serious crimes known to law enforcement from 2008 through 2012. The report provides extensive data about crime at the state and county levels. This supplement is an initial effort within the *Crime in Delaware* reporting process to provide extensive crime data about the City of Wilmington.

The methods used to prepare and analyze Wilmington's data are the same as those described in the main *Crime in Delaware* report, with one exception – data for Wilmington's two enforcement agencies - the Wilmington Police Department and the Wilmington Fire Marshall – were first merged before analyzing the city's data.

In this supplement, tables and figures with summary level data about offenses, clearances, and arrests are presented first. These are followed by detailed data tables with counts of offenses, clearances, and adult and juvenile arrests (Tables 3-6).

Note to the reader

Data for a calendar year are not considered final for the purposes of the *Crime in Delaware* report until offense counts become sufficiently stable, usually 12-15 months after the end of that year. Therefore, final data are provided for the 2008-2011 period and preliminary data for 2012.

Please see the full report (<http://cjc.delaware.gov/sac/publications/crime.shtml>) for information about methodology and considerations.

Wilmington Serious Crime At-a-Glance 2008 – 2012

Overall, about 2,000 fewer Group A offenses were reported in Wilmington in 2012 compared to 2008, a decline of about 13% (see Table 1 and Figure 1). All four major crime categories were lower compared to 2008, with the greatest declines for Other Property and Social Offenses (around 20%), Drug/Narcotic Offenses (about 15%), and Violent Offenses (about 13%). The number of homicides in 2012 (26) is identical to that for three of the previous four years.

The most frequently reported offenses in the city were Assault; Destruction, Damage, and Vandalism of Property; Larceny; Drug/Narcotic; Burglary; and Weapon Law Violation. Larceny, Assault and Destruction/Damage/Vandalism showed distinct downward trends from 2008 to 2012 (see Figure 2). Drug/Narcotic, Larceny, and Weapon Law offenses also have trended downward since 2008. The number of Burglary offenses trended upward to notable degree.

Based on 2012 preliminary data, offenses in all crime categories were cleared at rates comparable to or better than the rates from 2008 through 2011 (see Table 1 and Figure 3). Overall, 37% of all offenses committed in 2012 were cleared by the end of the calendar year.

While the number of juvenile arrests showed a sharp downward trend during this period (a 35% decrease overall), the number of total adult arrests changed little overall, with much variation across the four crime categories (see Table 2 and Figure 3).

Table 1: Wilmington Serious Crime Summary 2008 – 2012

| Serious Offenses Received 2008 – 2012¹ | | | | | |
|---|--------------------------|----------------|----------------|---------------|--------------------------|
| | Final Counts | | | | Preliminary Count |
| | 2008 | 2009 | 2010 | 2011 | 2012 |
| Violent Offenses | 4,536 | 4,271 | 4,328 | 3,838 | 3,942 |
| Percent Cleared | 43.3% | 46.5% | 46.0% | 48.8% | 50.0% |
| Serious Property Offenses | 4,153 | 3,888 | 4,426 | 3,974 | 4,004 |
| Percent Cleared | 11.2% | 13.5% | 13.6% | 13.2% | 12.0% |
| Drug Offenses | 1,764 | 1,709 | 1,564 | 1,779 | 1,493 |
| Percent Cleared | 93.3% | 93.1% | 94.4% | 93.6% | 94.2% |
| Other Property, Social Offenses | 5,062 | 4,531 | 4,748 | 4,040 | 4,031 |
| Percent Cleared | 26.4% | 27.8% | 27.3% | 28.3% | 28.3% |
| Total Offenses Received | 15,515 | 14,399 | 15,066 | 13,631 | 13,470 |
| Percent Cleared | 34.9% | 37.3% | 35.6% | 38.2% | 37.1% |
| Crime Rates for Serious Offenses Received per 1,000 Population | | | | | |
| Wilmington Population | 72,840 | 72,522 | 73,022 | 70,725 | 71,616 |
| | Final Rates | | | | Preliminary Rate |
| | 2008 | 2009 | 2010 | 2011 | 2012 |
| Violent Offenses | 62.3 | 58.9 | 59.3 | 54.3 | 55.0 |
| Serious Property Offenses | 57.0 | 53.6 | 60.6 | 56.2 | 55.9 |
| Drug Offenses | 24.2 | 23.6 | 21.4 | 25.2 | 20.9 |
| Other Property, Social Offenses | 69.5 | 62.5 | 65.0 | 57.1 | 56.3 |
| Total Offenses Received | 213.0 | 198.5 | 206.3 | 192.7 | 188.1 |
| Percentage Difference in Serious Offenses Received | | | | | |
| | Final Differences | | | | |
| | 08 - 09 | 09 - 10 | 10 - 11 | | |
| Violent Offenses | -5.84% | 1.33% | -11.32% | | |
| Serious Property Offenses | -6.38% | 13.84% | -10.21% | | |
| Drug Offenses | -3.12% | -8.48% | 13.75% | | |
| Other Property, Social Offenses | -10.49% | 4.79% | -14.91% | | |
| Total Offenses Received | -7.19% | 4.63% | -9.52% | | |

¹ Final data are provided for the 2008-2011 period and preliminary data for 2012.

Figure 1: Serious Crime in Wilmington by Category 2008-2012

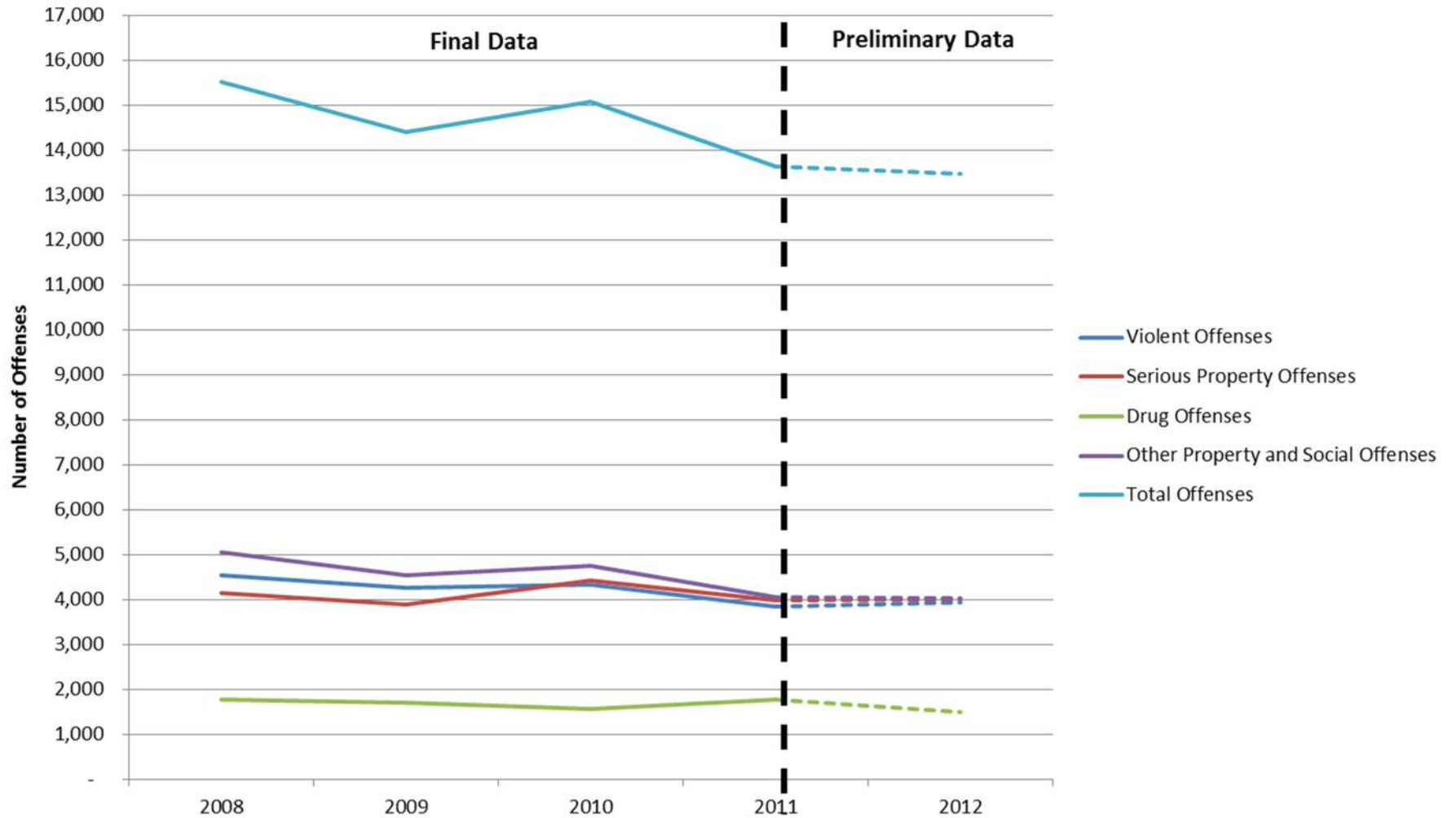
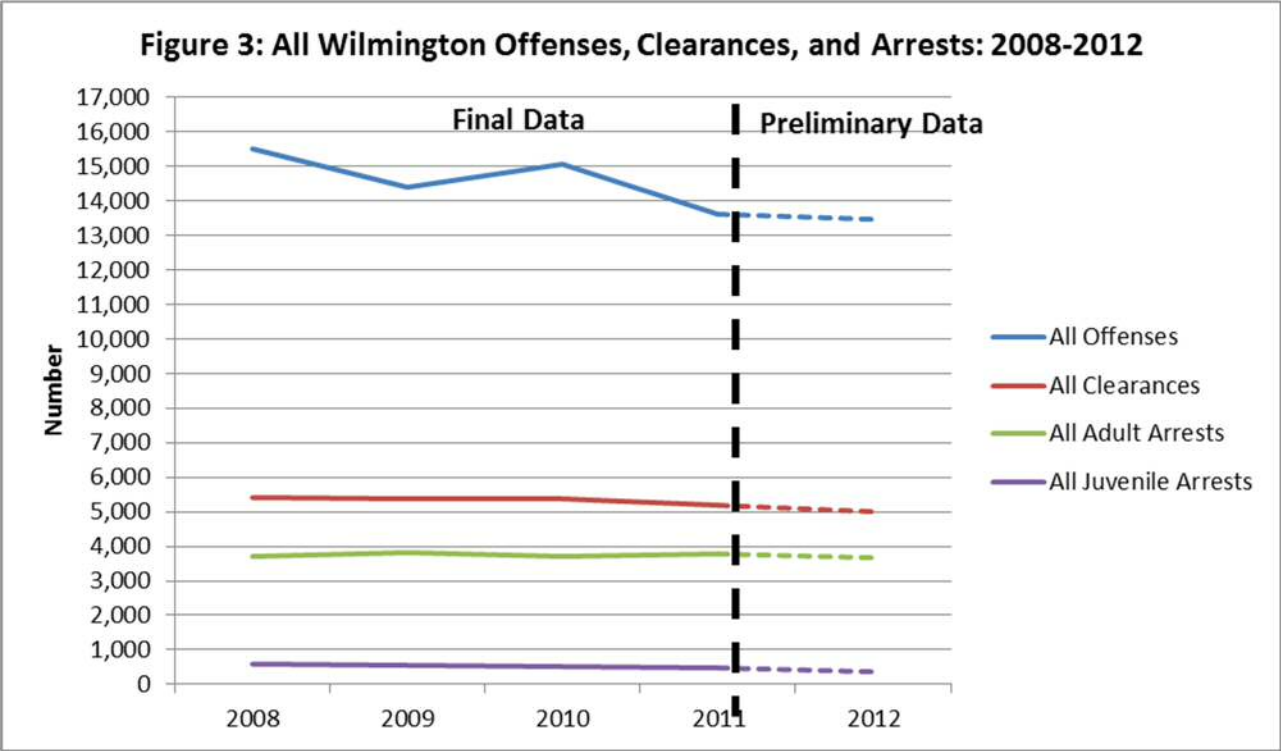
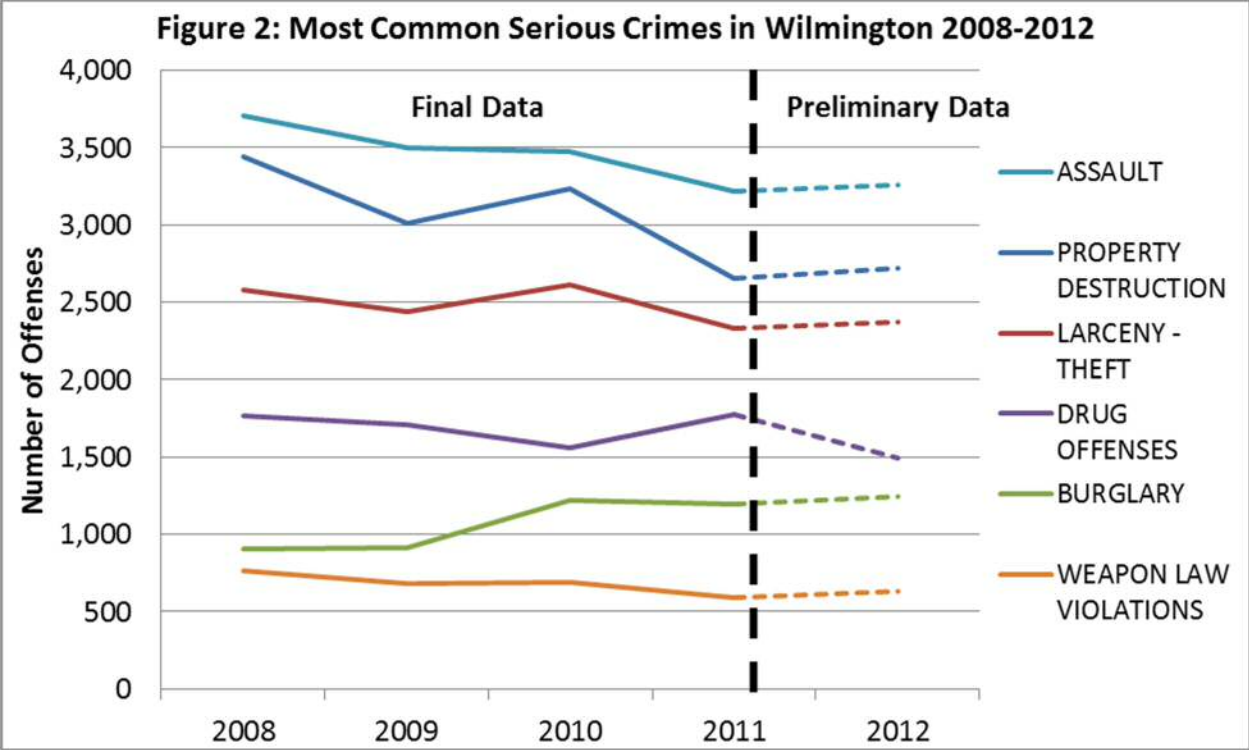


Table 2: Wilmington Arrests for Serious Offenses 2008-2012

| Wilmington Arrests for Serious Offenses | | | | | |
|--|---------------------|--------------|--------------|--------------|---------------------------|
| | Final Counts | | | | Preliminary Counts |
| | 2008 | 2009 | 2010 | 2011 | 2012 |
| Total Arrests | 4,276 | 4,363 | 4,221 | 4,255 | 4,028 |
| Violent Offenses | 1,828 | 1,970 | 1,854 | 1,835 | 1,838 |
| Serious Property Offenses | 369 | 421 | 496 | 401 | 388 |
| Drug Offenses | 1,392 | 1,360 | 1,229 | 1,409 | 1,258 |
| Other Property and Social Offenses | 687 | 612 | 642 | 610 | 544 |
| Total Adult Arrests | 3,694 | 3,804 | 3,705 | 3,783 | 3,653 |
| Violent Offenses | 1,566 | 1,708 | 1,614 | 1,599 | 1,639 |
| Serious Property Offenses | 317 | 339 | 400 | 340 | 324 |
| Drug Offenses | 1,258 | 1,241 | 1,152 | 1,319 | 1,205 |
| Other Property and Social Offenses | 553 | 516 | 539 | 525 | 485 |
| Total Juvenile Arrests | 582 | 559 | 516 | 472 | 375 |
| Violent Offenses | 262 | 262 | 240 | 236 | 199 |
| Serious Property Offenses | 52 | 82 | 96 | 61 | 64 |
| Drug Offenses | 134 | 119 | 77 | 90 | 53 |
| Other Property and Social Offenses | 134 | 96 | 103 | 85 | 59 |



DETAILED DATA TABLES

Table 3: All Wilmington Serious Offenses Received, by Crime, 2008-2012

| Wilmington Serious Offenses Received, by Crime, 2008 – 2012 | | | | | |
|--|---------------------|--------------|--------------|--------------|--------------------------|
| | Final Counts | | | | Preliminary Count |
| Group A Offenses | 2008 | 2009 | 2010 | 2011 | 2012 |
| Criminal Homicide | 26 | 17 | 26 | 26 | 26 |
| Murder and Nonnegligent Manslaughter | 26 | 17 | 26 | 26 | 26 |
| Manslaughter By Negligence | 0 | 0 | 0 | 0 | 0 |
| Kidnaping And Abduction | 52 | 57 | 51 | 49 | 45 |
| Sexual Offenses, Forcible | 76 | 91 | 67 | 71 | 76 |
| Rape By Force | 32 | 45 | 34 | 35 | 37 |
| Rape By Force - Attempted | 4 | 1 | 3 | 5 | 1 |
| Forcible Sodomy | 0 | 0 | 1 | 0 | 0 |
| Sexual Assault With Object | 0 | 0 | 0 | 0 | 0 |
| Forcible Fondling | 40 | 45 | 28 | 31 | 38 |
| Forcible Fondling - Attempted | 0 | 0 | 1 | 0 | 0 |
| Robbery | 676 | 607 | 708 | 472 | 533 |
| Firearm | 286 | 282 | 327 | 188 | 240 |
| Knife Or Cutting Instrument | 42 | 29 | 36 | 37 | 25 |
| Other Dangerous Weapon | 43 | 47 | 29 | 32 | 18 |
| Strong-Arm (Hands, Fists, Feet Etc.) | 305 | 249 | 316 | 215 | 250 |
| Assault | 3,706 | 3,499 | 3,476 | 3,220 | 3,262 |
| <i>Aggravated</i> | <i>844</i> | <i>801</i> | <i>754</i> | <i>679</i> | <i>729</i> |
| Firearm | 308 | 283 | 254 | 214 | 245 |
| Knife Or Cutting Instrument | 180 | 213 | 167 | 179 | 187 |
| Other Dangerous Weapon | 263 | 260 | 255 | 202 | 230 |
| Hands, Fists, Feet, Etc.-Aggravated Injury | 93 | 45 | 78 | 84 | 67 |
| <i>Other Assaults</i> | <i>2,862</i> | <i>2,698</i> | <i>2,722</i> | <i>2,541</i> | <i>2,533</i> |
| Simple/Harassment | 2,093 | 2,018 | 1,979 | 1,926 | 1,944 |
| Intimidation | 769 | 680 | 743 | 615 | 589 |
| Arson | 37 | 30 | 24 | 18 | 5 |
| Structure | 18 | 20 | 17 | 11 | 3 |
| Mobile | 10 | 9 | 4 | 5 | 2 |
| Other | 9 | 1 | 2 | 2 | 0 |
| Extortion/Blackmail | 0 | 1 | 0 | 1 | 1 |

Table 3: All Wilmington Serious Offenses Received, by Crime, 2008-2012 (continued)

| Wilmington Serious Offenses Received, by Crime, 2008 – 2012 | | | | | |
|--|---------------------|--------------|--------------|--------------|--------------------------|
| | Final Counts | | | | Preliminary Count |
| Group A Offenses | 2008 | 2009 | 2010 | 2011 | 2012 |
| Burglary | 905 | 911 | 1,223 | 1,196 | 1,245 |
| Forcible Entry | 522 | 450 | 626 | 600 | 575 |
| Unlawful Entry - No Force | 303 | 349 | 469 | 439 | 524 |
| Attempted Forcible Entry | 80 | 112 | 128 | 157 | 146 |
| | | | | | |
| Larceny - Theft | 2,580 | 2,436 | 2,612 | 2,331 | 2,372 |
| Pocket Picking | 5 | 13 | 3 | 14 | 10 |
| Purse Snatching | 10 | 20 | 12 | 11 | 13 |
| Shoplifting | 149 | 189 | 204 | 250 | 176 |
| Theft From Building | 804 | 803 | 854 | 852 | 857 |
| From Coin-Operated Machine Or Device | 4 | 0 | 3 | 0 | 1 |
| Theft From Motor Vehicle | 851 | 917 | 1,031 | 718 | 804 |
| Theft Of Motor Vehicle Parts/Accessories | 487 | 257 | 256 | 228 | 243 |
| Other | 270 | 237 | 249 | 258 | 268 |
| | | | | | |
| Motor Vehicle Theft | 631 | 510 | 567 | 428 | 381 |
| Autos | 582 | 453 | 509 | 382 | 339 |
| Trucks And Buses | 28 | 41 | 31 | 24 | 22 |
| Other Vehicles | 21 | 16 | 27 | 22 | 20 |
| | | | | | |
| Drug/Narcotic Offenses | 1,764 | 1,709 | 1,564 | 1,779 | 1,493 |
| Drug/Narcotic | 1,214 | 1,186 | 1,136 | 1,299 | 1,130 |
| Drug Equipment | 550 | 523 | 428 | 480 | 363 |
| | | | | | |
| Counterfeit/Forgery | 83 | 90 | 84 | 95 | 72 |
| | | | | | |
| Fraud | 581 | 624 | 579 | 566 | 486 |
| False Pretense, Swindle, Confidence Game | 91 | 83 | 78 | 76 | 84 |
| Credit Card, Automated Teller Machine | 77 | 88 | 103 | 99 | 85 |
| Impersonation | 413 | 453 | 398 | 390 | 316 |
| Welfare Fraud | 0 | 0 | 0 | 0 | 0 |
| Wire Fraud | 0 | 0 | 0 | 1 | 1 |
| | | | | | |
| Embezzlement | 10 | 4 | 3 | 8 | 8 |
| | | | | | |
| Stolen Property | 152 | 98 | 141 | 100 | 105 |

Table 3: All Wilmington Serious Offenses Received, by Crime, 2008-2012 (continued)

| Wilmington Serious Offenses Received, by Crime, 2008 – 2012 | | | | | |
|--|---------------------|---------------|---------------|---------------|--------------------------|
| | Final Counts | | | | Preliminary Count |
| Group A Offenses | 2008 | 2009 | 2010 | 2011 | 2012 |
| Destruction, Damage, Vandalism Of Property | 3,441 | 3,010 | 3,230 | 2,654 | 2,720 |
| Sexual Offenses, Nonforcible | 11 | 6 | 3 | 6 | 5 |
| Incest | 0 | 0 | 0 | 0 | 0 |
| Statutory Rape | 11 | 6 | 3 | 6 | 5 |
| Pornography/Obscene Material | 5 | 3 | 6 | 4 | 2 |
| Gambling Offenses | 4 | 6 | 6 | 3 | 1 |
| Prostitution Offenses | 7 | 8 | 8 | 8 | 1 |
| Prostitution | 4 | 2 | 6 | 3 | 1 |
| Promoting Prostitution | 3 | 6 | 2 | 5 | 0 |
| Bribery | 0 | 0 | 0 | 2 | 1 |
| Weapon Law Violations | 768 | 682 | 688 | 594 | 630 |
| Total Group A Offenses | 15,515 | 14,399 | 15,066 | 13,631 | 13,470 |
| Group A Complaints | 11,088 | 10,399 | 10,765 | 9,902 | 9,803 |

Table 4: Clearances of Wilmington Serious Offenses Received, by Crime, 2008-2012

| Clearances of Offenses Received, by Crime, 2008 – 2012 | | | | | |
|---|---------------------|--------------|--------------|--------------|--------------------|
| | Final Counts | | | | Preliminary |
| | 2008 | 2009 | 2010 | 2011 | Count |
| | | | | | 2012 |
| Criminal Homicide | 7 | 11 | 11 | 11 | 8 |
| Murder and Nonnegligent Manslaughter | 7 | 11 | 11 | 11 | 8 |
| Manslaughter By Negligence | 0 | 0 | 0 | 0 | 0 |
| | | | | | |
| Kidnaping And Abduction | 32 | 44 | 30 | 34 | 35 |
| | | | | | |
| Sexual Offenses, Forcible | 29 | 42 | 17 | 33 | 24 |
| Rape By Force | 15 | 25 | 9 | 15 | 11 |
| Rape By Force - Attempted | 0 | 0 | 0 | 2 | 0 |
| Forcible Sodomy | 0 | 0 | 0 | 0 | 0 |
| Sexual Assault With Object | 0 | 0 | 0 | 0 | 0 |
| Forcible Fondling | 14 | 17 | 8 | 16 | 13 |
| Forcible Fondling - Attempted | 0 | 0 | 0 | 0 | 0 |
| | | | | | |
| Robbery | 171 | 175 | 158 | 136 | 135 |
| Firearm | 81 | 78 | 66 | 59 | 62 |
| Knife Or Cutting Instrument | 10 | 6 | 11 | 9 | 7 |
| Other Dangerous Weapon | 6 | 15 | 7 | 13 | 7 |
| Strong-Arm (Hands, Fists, Feet Etc.) | 74 | 76 | 74 | 55 | 59 |
| | | | | | |
| Assault | 1,726 | 1,715 | 1,773 | 1,658 | 1,770 |
| <i>Aggravated</i> | 482 | 452 | 400 | 369 | 438 |
| Firearm | 119 | 118 | 79 | 66 | 114 |
| Knife Or Cutting Instrument | 144 | 147 | 131 | 132 | 136 |
| Other Dangerous Weapon | 161 | 158 | 150 | 125 | 154 |
| Hands, Fists, Feet, Etc.-Aggravated Injury | 58 | 29 | 40 | 46 | 34 |
| <i>Other Assaults</i> | 1,244 | 1,263 | 1,373 | 1,289 | 1,332 |
| Simple/Harassment | 923 | 978 | 1042 | 1025 | 1061 |
| Intimidation | 321 | 285 | 331 | 264 | 271 |
| | | | | | |
| Arson | 8 | 10 | 5 | 1 | 0 |
| Structure | 7 | 9 | 4 | 0 | 0 |
| Mobile | 0 | 1 | 0 | 0 | 0 |
| Other | 1 | 0 | 1 | 1 | 0 |
| | | | | | |
| Extortion/Blackmail | 0 | 0 | 0 | 0 | 0 |

Table 4: Clearances of Wilmington Serious Offenses Received, by Crime, 2008-2012 (continued)

| Clearances of Offenses Received, by Crime, 2008 – 2012 | | | | | |
|---|---------------------|--------------|--------------|--------------|--------------------------|
| | Final Counts | | | | Preliminary Count |
| Group A Offenses | 2008 | 2009 | 2010 | 2011 | 2012 |
| Burglary | 146 | 159 | 178 | 137 | 169 |
| Forcible Entry | 74 | 73 | 89 | 65 | 92 |
| Unlawful Entry - No Force | 54 | 67 | 78 | 54 | 60 |
| Attempted Forcible Entry | 18 | 19 | 11 | 18 | 17 |
| | | | | | |
| Larceny - Theft | 241 | 290 | 357 | 334 | 267 |
| Pocket Picking | 1 | 3 | 0 | 3 | 2 |
| Purse Snatching | 1 | 2 | 2 | 3 | 1 |
| Shoplifting | 83 | 122 | 159 | 160 | 93 |
| Theft From Building | 99 | 110 | 133 | 115 | 112 |
| From Coin-Operated Machine Or Device | 1 | 0 | 0 | 0 | 0 |
| Theft From Motor Vehicle | 23 | 30 | 40 | 23 | 34 |
| Theft Of Motor Vehicle Parts/Accessories | 19 | 8 | 8 | 9 | 6 |
| Other | 14 | 15 | 15 | 21 | 19 |
| | | | | | |
| Motor Vehicle Theft | 71 | 67 | 60 | 52 | 46 |
| Autos | 68 | 60 | 57 | 46 | 38 |
| Trucks And Buses | 2 | 7 | 0 | 3 | 3 |
| Other Vehicles | 1 | 0 | 3 | 3 | 5 |
| | | | | | |
| Drug/Narcotic Offenses | 1,645 | 1,591 | 1,476 | 1,666 | 1,407 |
| Drug/Narcotic | 1,125 | 1,106 | 1,064 | 1,205 | 1,058 |
| Drug Equipment | 520 | 485 | 412 | 461 | 349 |
| | | | | | |
| Counterfeit/Forgery | 44 | 42 | 32 | 36 | 27 |
| | | | | | |
| Fraud | 314 | 330 | 306 | 317 | 255 |
| False Pretense, Swindle, Confidence Game | 38 | 37 | 34 | 33 | 37 |
| Credit Card, Automated Teller Machine | 4 | 4 | 2 | 5 | 4 |
| Impersonation | 272 | 289 | 270 | 279 | 214 |
| Welfare Fraud | 0 | 0 | 0 | 0 | 0 |
| Wire Fraud | 0 | 0 | 0 | 0 | 0 |
| | | | | | |
| Embezzlement | 3 | 0 | 0 | 3 | 4 |
| | | | | | |
| Stolen Property | 133 | 94 | 126 | 92 | 95 |

Table 4: Clearances of Wilmington Serious Offenses Received, by Crime, 2008-2012 (continued)

| Clearances of Offenses Received, by Crime, 2008 – 2012 | | | | | |
|---|---------------------|--------------|--------------|--------------|--------------------------|
| | Final Counts | | | | Preliminary Count |
| Group A Offenses | 2008 | 2009 | 2010 | 2011 | 2012 |
| Destruction, Damage, Vandalism Of Property | 406 | 390 | 448 | 333 | 365 |
| Sexual Offenses, Nonforcible | 2 | 3 | 1 | 4 | 3 |
| Incest | 0 | 0 | 0 | 0 | 0 |
| Statutory Rape | 2 | 3 | 1 | 4 | 3 |
| Pornography/Obscene Material | 2 | 1 | 2 | 3 | 1 |
| Gambling Offenses | 4 | 6 | 6 | 3 | 0 |
| Prostitution Offenses | 7 | 8 | 8 | 7 | 1 |
| Prostitution | 4 | 2 | 6 | 3 | 1 |
| Promoting Prostitution | 3 | 6 | 2 | 4 | 0 |
| Bribery | 0 | 0 | 0 | 1 | 1 |
| Weapon Law Violations | 422 | 387 | 366 | 344 | 388 |
| Total Group A Clearances | 5,413 | 5,365 | 5,360 | 5,205 | 5,001 |

Table 5: Wilmington Adult Arrests, by Crime, 2008-2012

| Wilmington Adult Arrests for Serious Offenses, by Crime, 2008 – 2012 | | | | | |
|---|--------------|--------------|--------------|--------------|-------------------|
| | Final Counts | | | | Preliminary Count |
| | 2008 | 2009 | 2010 | 2011 | 2012 |
| Criminal Homicide | 13 | 16 | 11 | 14 | 5 |
| Murder and Nonnegligent Manslaughter | 13 | 16 | 11 | 14 | 5 |
| Manslaughter By Negligence | 0 | 0 | 0 | 0 | 0 |
| | | | | | |
| Kidnaping And Abduction | 24 | 47 | 32 | 27 | 30 |
| | | | | | |
| Sexual Offenses, Forcible | 8 | 17 | 8 | 21 | 14 |
| Rape By Force | 2 | 9 | 7 | 10 | 5 |
| Rape By Force - Attempted | 0 | 1 | 0 | 0 | 1 |
| Forcible Sodomy | 0 | 0 | 0 | 0 | 0 |
| Sexual Assault With Object | 0 | 0 | 0 | 0 | 0 |
| Forcible Fondling | 6 | 7 | 1 | 11 | 7 |
| Forcible Fondling - Attempted | 0 | 0 | 0 | 0 | 1 |
| | | | | | |
| Robbery | 130 | 142 | 131 | 118 | 100 |
| Firearm | 63 | 53 | 51 | 46 | 42 |
| Knife Or Cutting Instrument | 10 | 5 | 9 | 8 | 7 |
| Other Dangerous Weapon | 6 | 15 | 6 | 12 | 6 |
| Strong-Arm (Hands, Fists, Feet Etc.) | 51 | 69 | 65 | 52 | 45 |
| | | | | | |
| Assault | 1,391 | 1,486 | 1,432 | 1,419 | 1,490 |
| <i>Aggravated</i> | 337 | 356 | 296 | 286 | 344 |
| Firearm | 66 | 70 | 46 | 41 | 66 |
| Knife Or Cutting Instrument | 109 | 119 | 94 | 106 | 110 |
| Other Dangerous Weapon | 115 | 127 | 120 | 95 | 128 |
| Hands, Fists, Feet, Etc.-Aggravated Injury | 47 | 40 | 36 | 44 | 40 |
| <i>Other Assaults</i> | 1,054 | 1,130 | 1,136 | 1,133 | 1,146 |
| Simple/Harassment | 781 | 853 | 869 | 897 | 878 |
| Intimidation | 273 | 277 | 267 | 236 | 268 |
| | | | | | |
| Arson | 5 | 7 | 2 | 0 | 0 |
| Structure | 4 | 4 | 1 | 0 | 0 |
| Mobile | 0 | 3 | 0 | 0 | 0 |
| Other | 1 | 0 | 1 | 0 | 0 |
| | | | | | |
| Extortion/Blackmail | 0 | 0 | 0 | 0 | 0 |

Table 5: Wilmington Adult Arrests, by Crime, 2008-2012 (continued)

| Wilmington Adult Arrests for Serious Offenses, by Crime, 2008 – 2012 | | | | | |
|---|---------------------|--------------|--------------|--------------|--------------------|
| | Final Counts | | | | Preliminary |
| | 2008 | 2009 | 2010 | 2011 | Count |
| | | | | | 2012 |
| Burglary | 92 | 87 | 96 | 78 | 95 |
| Forcible Entry | 43 | 44 | 55 | 37 | 49 |
| Unlawful Entry - No Force | 36 | 32 | 32 | 31 | 35 |
| Attempted Forcible Entry | 13 | 11 | 9 | 10 | 11 |
| | | | | | |
| Larceny - Theft | 204 | 232 | 294 | 248 | 219 |
| Pocket Picking | 0 | 1 | 0 | 2 | 0 |
| Purse Snatching | 0 | 1 | 0 | 3 | 0 |
| Shoplifting | 79 | 123 | 155 | 147 | 94 |
| Theft From Building | 91 | 78 | 102 | 70 | 76 |
| From Coin-Operated Machine Or Device | 1 | 0 | 0 | 0 | 0 |
| Theft From Motor Vehicle | 12 | 14 | 26 | 9 | 28 |
| Theft Of Motor Vehicle Parts/Accessories | 10 | 8 | 5 | 4 | 4 |
| Other | 11 | 7 | 6 | 13 | 17 |
| | | | | | |
| Motor Vehicle Theft | 16 | 13 | 8 | 14 | 10 |
| Autos | 14 | 12 | 8 | 11 | 8 |
| Trucks And Buses | 1 | 1 | 0 | 2 | 0 |
| Other Vehicles | 1 | 0 | 0 | 1 | 2 |
| | | | | | |
| Drug/Narcotic Offenses | 1,258 | 1,241 | 1,152 | 1,319 | 1,205 |
| Drug/Narcotic | 1,105 | 1,105 | 1,066 | 1,205 | 1,097 |
| Drug Equipment | 153 | 136 | 86 | 114 | 108 |
| | | | | | |
| Counterfeit/Forgery | 33 | 41 | 24 | 31 | 22 |
| | | | | | |
| Fraud | 229 | 253 | 231 | 253 | 208 |
| False Pretense, Swindle, Confidence Game | 23 | 30 | 30 | 26 | 32 |
| Credit Card, Automated Teller Machine | 1 | 2 | 1 | 0 | 1 |
| Impersonation | 205 | 221 | 200 | 227 | 175 |
| Welfare Fraud | 0 | 0 | 0 | 0 | 0 |
| Wire Fraud | 0 | 0 | 0 | 0 | 0 |
| | | | | | |
| Embezzlement | 4 | 2 | 1 | 3 | 4 |
| | | | | | |
| Stolen Property | 87 | 58 | 90 | 66 | 84 |

Table 5: Wilmington Adult Arrests, by Crime, 2008-2012 (continued)

| Wilmington Adult Arrests for Serious Offenses, by Crime, 2008 – 2012 | | | | | |
|---|---------------------|--------------|--------------|--------------|--------------------|
| | Final Counts | | | | Preliminary |
| | 2008 | 2009 | 2010 | 2011 | Count |
| | | | | | 2012 |
| Destruction, Damage, Vandalism Of Property | 122 | 109 | 111 | 95 | 94 |
| Sexual Offenses, Nonforcible | 3 | 2 | 0 | 1 | 2 |
| Incest | 0 | 0 | 0 | 0 | 0 |
| Statutory Rape | 3 | 2 | 0 | 1 | 2 |
| | | | | | |
| Pornography/Obscene Material | 2 | 0 | 2 | 2 | 0 |
| | | | | | |
| Gambling Offenses | 4 | 12 | 8 | 5 | 0 |
| | | | | | |
| Prostitution Offenses | 5 | 6 | 7 | 3 | 1 |
| Prostitution | 2 | 2 | 5 | 1 | 1 |
| Promoting Prostitution | 3 | 4 | 2 | 2 | 0 |
| | | | | | |
| Bribery | 0 | 0 | 0 | 1 | 1 |
| | | | | | |
| Weapon Law Violations | 64 | 33 | 65 | 65 | 69 |
| | | | | | |
| Total Adult Arrest for Group A Offenses | 3,694 | 3,804 | 3,705 | 3,783 | 3,653 |

Table 6: Wilmington Juvenile Arrests for Serious Offenses, by Crime, 2008-2012

| Wilmington Juvenile Arrests for Serious Offenses, by Crime, 2008 – 2012 | | | | | |
|--|---------------------|-------------|-------------|-------------|--------------------|
| | Final Counts | | | | Preliminary |
| | 2008 | 2009 | 2010 | 2011 | Count |
| | | | | | 2012 |
| Criminal Homicide | 2 | 2 | 1 | 0 | 1 |
| Murder and Nonnegligent Manslaughter | 2 | 2 | 1 | 0 | 1 |
| Manslaughter By Negligence | 0 | 0 | 0 | 0 | 0 |
| | | | | | |
| Kidnaping And Abduction | 5 | 1 | 1 | 1 | 3 |
| | | | | | |
| Sexual Offenses, Forcible | 4 | 3 | 2 | 3 | 4 |
| Rape By Force | 3 | 1 | 0 | 1 | 2 |
| Rape By Force - Attempted | 0 | 0 | 0 | 1 | 0 |
| Forcible Sodomy | 0 | 0 | 0 | 0 | 0 |
| Sexual Assault With Object | 0 | 0 | 0 | 0 | 0 |
| Forcible Fondling | 1 | 2 | 2 | 1 | 2 |
| Forcible Fondling - Attempted | 0 | 0 | 0 | 0 | 0 |
| | | | | | |
| Robbery | 78 | 67 | 43 | 33 | 33 |
| Firearm | 23 | 25 | 17 | 13 | 14 |
| Knife Or Cutting Instrument | 0 | 0 | 1 | 2 | 2 |
| Other Dangerous Weapon | 1 | 8 | 1 | 2 | 0 |
| Strong-Arm (Hands, Fists, Feet Etc.) | 54 | 34 | 24 | 16 | 17 |
| | | | | | |
| Assault | 173 | 189 | 193 | 199 | 158 |
| <i>Aggravated</i> | 64 | 53 | 46 | 40 | 35 |
| Firearm | 12 | 12 | 5 | 9 | 7 |
| Knife Or Cutting Instrument | 26 | 15 | 14 | 15 | 10 |
| Other Dangerous Weapon | 17 | 16 | 19 | 10 | 15 |
| Hands, Fists, Feet, Etc.-Aggravated Injury | 9 | 10 | 8 | 6 | 3 |
| <i>Other Assaults</i> | 109 | 136 | 147 | 159 | 123 |
| Simple/Harassment | 85 | 116 | 120 | 133 | 107 |
| Intimidation | 24 | 20 | 27 | 26 | 16 |
| | | | | | |
| Arson | 1 | 1 | 0 | 0 | 0 |
| Structure | 0 | 1 | 0 | 0 | 0 |
| Mobile | 1 | 0 | 0 | 0 | 0 |
| Other | 0 | 0 | 0 | 0 | 0 |
| | | | | | |
| Extortion/Blackmail | 0 | 0 | 0 | 0 | 0 |

Table 6: Wilmington Juvenile Arrests for Serious Offenses, by Crime, 2008-2012 (continued)

| Wilmington Juvenile Arrests for Serious Offenses, by Crime, 2008 – 2012 | | | | | |
|--|---------------------|-------------|-------------|-------------|--------------------|
| | Final Counts | | | | Preliminary |
| | 2008 | 2009 | 2010 | 2011 | Count |
| | | | | | 2012 |
| Burglary | 32 | 33 | 48 | 19 | 40 |
| Forcible Entry | 9 | 17 | 17 | 7 | 15 |
| Unlawful Entry - No Force | 18 | 12 | 25 | 10 | 19 |
| Attempted Forcible Entry | 5 | 4 | 6 | 2 | 6 |
| | | | | | |
| Larceny - Theft | 13 | 39 | 32 | 36 | 17 |
| Pocket Picking | 0 | 0 | 0 | 0 | 1 |
| Purse Snatching | 0 | 0 | 1 | 0 | 0 |
| Shoplifting | 7 | 9 | 11 | 13 | 1 |
| Theft From Building | 4 | 11 | 9 | 15 | 10 |
| From Coin-Operated Machine Or Device | 0 | 0 | 0 | 0 | 0 |
| Theft From Motor Vehicle | 2 | 13 | 6 | 5 | 3 |
| Theft Of Motor Vehicle Parts/Accessories | 0 | 0 | 0 | 0 | 0 |
| Other | 0 | 6 | 5 | 3 | 2 |
| | | | | | |
| Motor Vehicle Theft | 6 | 9 | 16 | 6 | 7 |
| Autos | 6 | 8 | 15 | 6 | 3 |
| Trucks And Buses | 0 | 1 | 0 | 0 | 1 |
| Other Vehicles | 0 | 0 | 1 | 0 | 3 |
| | | | | | |
| Drug/Narcotic Offenses | 134 | 119 | 77 | 90 | 53 |
| Drug/Narcotic | 131 | 117 | 76 | 86 | 52 |
| Drug Equipment | 3 | 2 | 1 | 4 | 1 |
| | | | | | |
| Counterfeit/Forgery | 2 | 0 | 0 | 0 | 0 |
| | | | | | |
| Fraud | 29 | 25 | 15 | 20 | 12 |
| False Pretense, Swindle, Confidence Game | 0 | 1 | 1 | 1 | 0 |
| Credit Card, Automated Teller Machine | 0 | 1 | 0 | 0 | 0 |
| Impersonation | 29 | 23 | 14 | 19 | 12 |
| Welfare Fraud | 0 | 0 | 0 | 0 | 0 |
| Wire Fraud | 0 | 0 | 0 | 0 | 0 |
| | | | | | |
| Embezzlement | 0 | 0 | 0 | 0 | 0 |
| | | | | | |
| Stolen Property | 52 | 26 | 38 | 31 | 13 |

Table 6: Wilmington Juvenile Arrests for Serious Offenses, by Crime, 2008-2012 (continued)

| Wilmington Juvenile Arrests for Serious Offenses, by Crime, 2008 – 2012 | | | | | |
|--|---------------------|-------------|-------------|-------------|--------------------|
| | Final Counts | | | | Preliminary |
| | 2008 | 2009 | 2010 | 2011 | Count |
| | | | | | 2012 |
| Destruction, Damage, Vandalism Of Property | 27 | 24 | 27 | 14 | 13 |
| Sexual Offenses, Nonforcible | 0 | 1 | 0 | 1 | 0 |
| Incest | 0 | 0 | 0 | 1 | 0 |
| Statutory Rape | 0 | 1 | 0 | 0 | 0 |
| | | | | | |
| Pornography/Obscene Material | 0 | 0 | 0 | 0 | 0 |
| | | | | | |
| Gambling Offenses | 1 | 1 | 0 | 1 | 0 |
| | | | | | |
| Prostitution Offenses | 0 | 0 | 0 | 0 | 0 |
| Prostitution | 0 | 0 | 0 | 0 | 0 |
| Promoting Prostitution | 0 | 0 | 0 | 0 | 0 |
| | | | | | |
| Bribery | 0 | 0 | 0 | 0 | 0 |
| | | | | | |
| Weapon Law Violations | 23 | 19 | 23 | 18 | 21 |
| | | | | | |
| Total Adult Arrest for Group A Offenses | 582 | 559 | 516 | 472 | 375 |

